

City Horn

Installation Instructions

Volkswagen Type 2

The kit contains the following parts:

Qty.	Description	Spare parts No.
1	Horn	133 951 113
1	Bracket	111 951 185
3	Bolt	N 10 239.11
3	Spring washer	N 12 008.2
2	Nut	N 11 008.8
1	Switch	111 955 511 B
1	Knob	111 955 541 C
1	Cap	211 941 543 D
1	Escutcheon	111 941 515
1	Wiring harness	211 971 191
1	Wire coil	111 971 977
1	Multiple	111 971 511
1	Cable	N 20 902.1

Work sequence:

- Disconnect battery strap
- Remove left front
- Install city horn
- Install standard horn

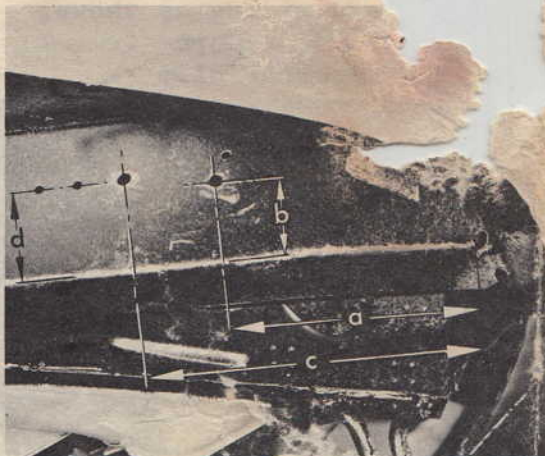


Fig. 1 Drill holes in front side member

- a = 160 mm (6 5/16 in.)
- b = 62 mm (2 7/16 in.)
- c = 222 mm (8 6/8 in.)
- d = 70 mm (2 3/4 in.)
- hole diameter 9 mm (3/8 in.)

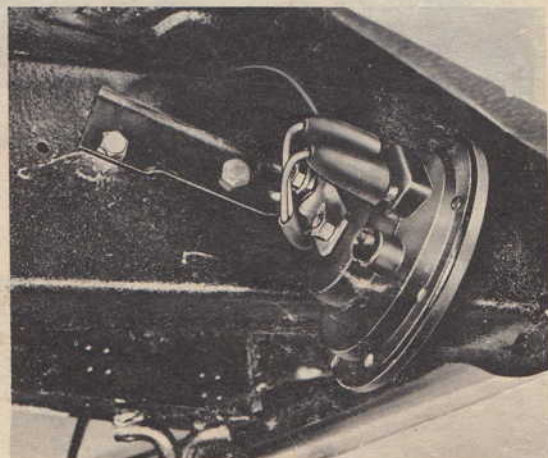


Fig. 2 Install standard horn together with bracket to right front member, connect and route wiring as shown.

- Remove cover plate below pedal cluster

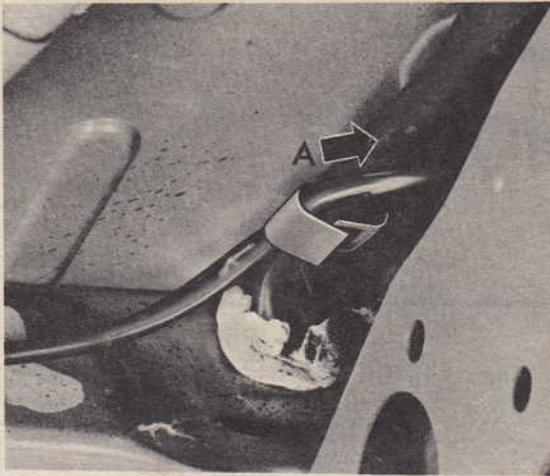


Fig. 3 Route wiring below vehicle as shown and secure with clip of main harness

arrow A = to standard horn

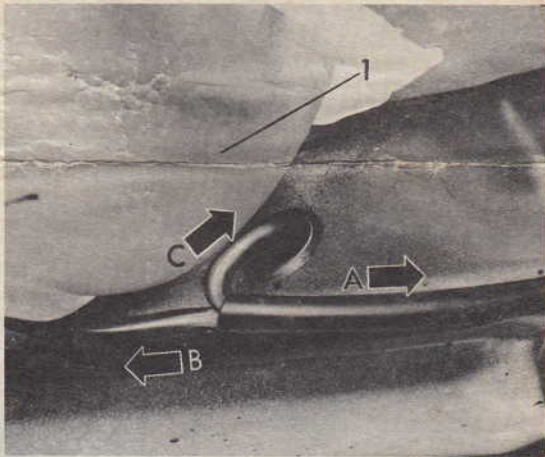


Fig. 4 Route wiring as shown

A = to standard horn

B = to City horn (installed on left front side member)

C = to dashboard

1 = heater pipe elbow

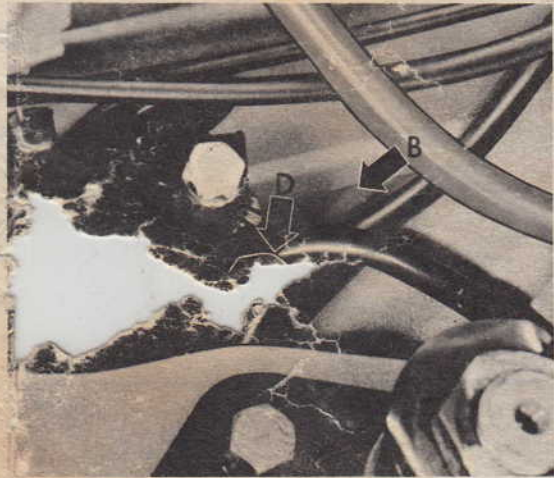


Fig. 5 Route wiring as shown:

B = to City horn
D = securing clip



Route wiring as shown:

B = to City horn
D = securing clip

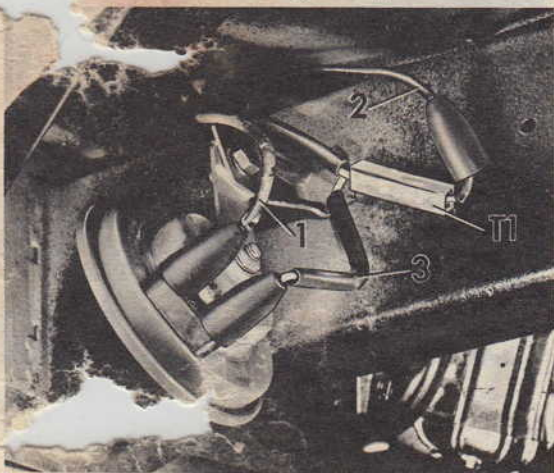


Fig. 7 Connect wires as shown:

a = originally black/
yellow wire (1) to
City horn

- b = originally brown wire (2) connector (T1)
- c = short brown wire of new wiring harness (3) to City horn

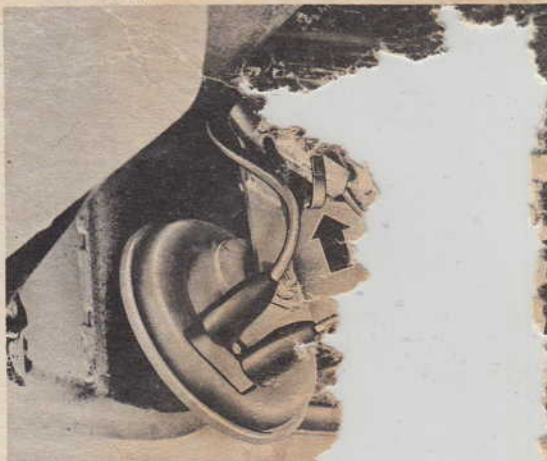


Fig. 8 Secure wire (arrow) to horn

- Connect brown wires
- Reinstall pedal cluster
- Connect wires behind dashboard in the following sequence:
 - a = short black/yellow wire to fuse 12 in fuse box and a terminal on switch
 - b = long black/yellow wire to other terminal on switch

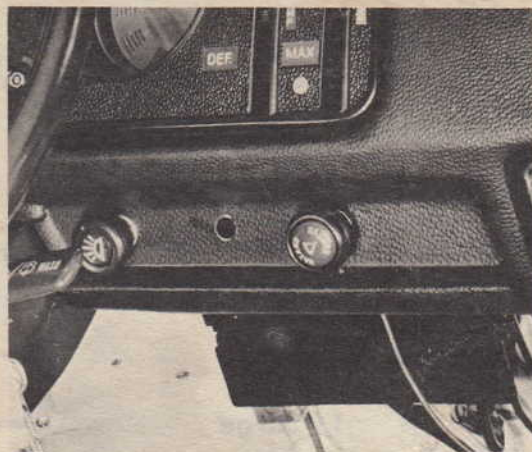
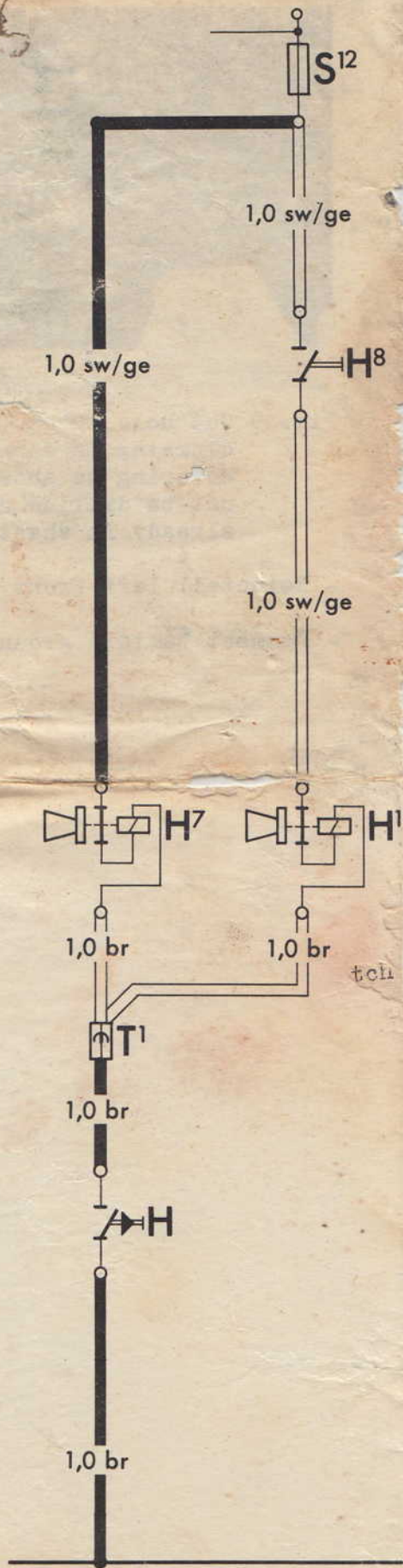


Fig. 9 Cut hole 10 mm (3/8 in.) diameter in dashboard covering as shown (must not be drilled as hole is already in sheet metal)

- Reinstall left front trim
- Connect battery ground strap



Explanation to current flow diagram:

solid lines = wires in vehicle
 open lines = wires to be installed new

- H - Horn button
- H1 - Horn, standard
- H7 - City horn
- H8 - Switch for standard horn
- S12 - Fuse in fuse box (terminal 15)
- T1 - Wire connector, single

Color codes:

br = brown
 sw/ge = black/yellow