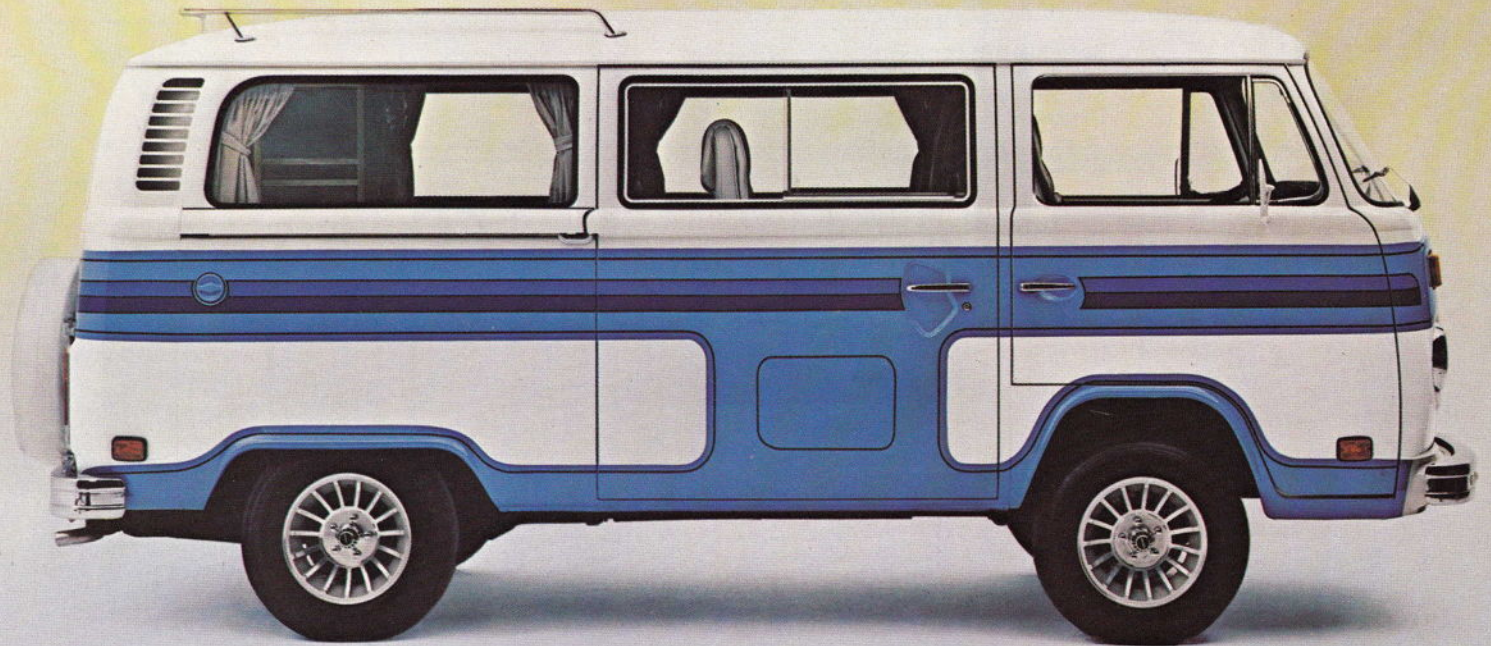
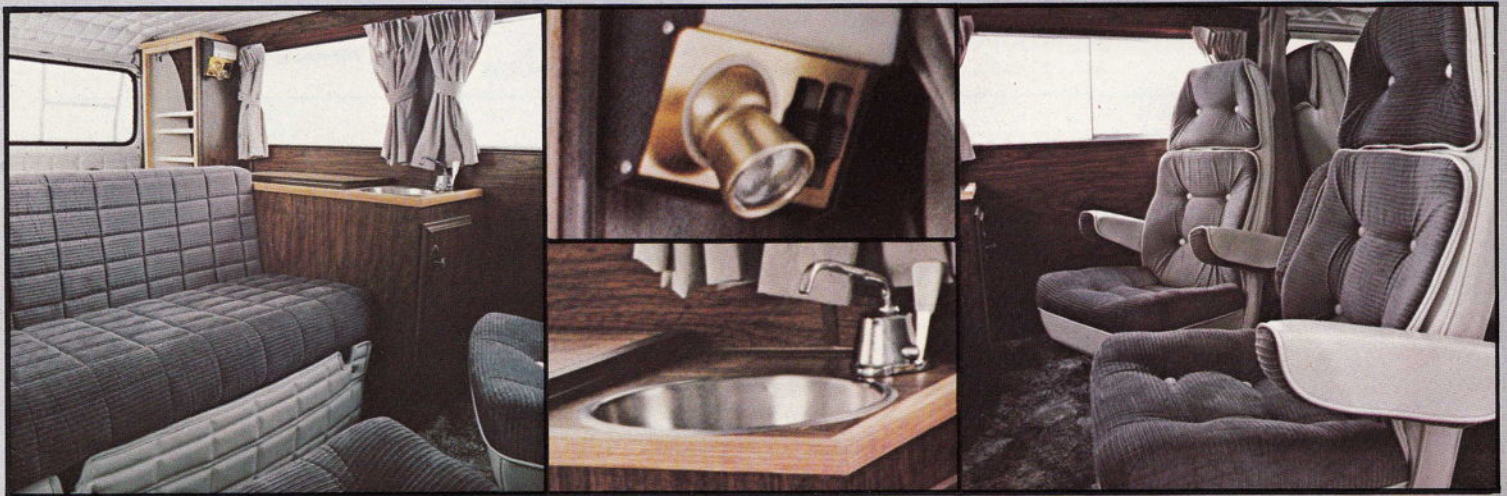


VW'S NEW LIMITED EDITION LANDMARK VAN.



More fun because it's ready to run.



Drive a new Landmark Van off our floor—and you're ready to hit the road!

VW Landmarks are the vans with fully appointed interiors. You get luxury features like bucket seats and an ice box as standard equipment. Plus a peppy, two-litre, fuel-injected engine. So you're all set to move in—and move out.

And you save, too. Because part of the fun of Landmarks is the low, low price.



See the reverse side for complete Landmark specifications. You also get famous VW reliability and efficiency.

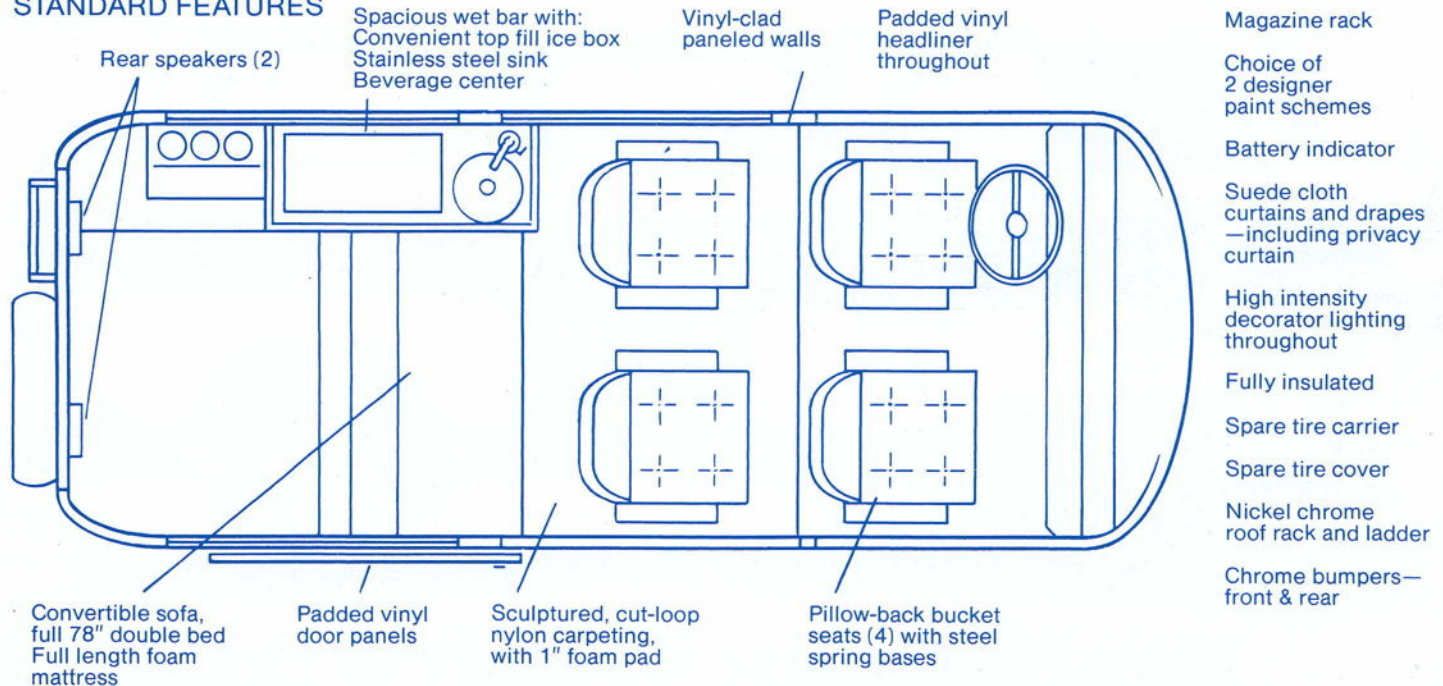
All combining to give you the best in comfort and convenience of any van. Not to mention a lot more enjoyment.

But don't wait. Only 300 Landmarks have been produced for this special limited edition!

INTRODUCING VW'S LANDMARK VAN.

It comes completely finished
so your fun starts right away.

STANDARD FEATURES



AVAILABLE OPTIONS

AM/FM push button radio
AM/FM/MPX 8-Track
AM/FM/MPX Cassette

40-CH CB/AM/FM/MPX
8-Track w/power antenna
Power antenna for AM/FM/CB

Deluxe recliner bucket seats
Custom wheels and raised letter tires

1978 VW BUS SPECIFICATIONS

ENGINE:	Type	Air-cooled, rear mounted
	Cylinders	4 cylinders, opposed
	Displacement	120.2 cubic inches (1970 cc)
	SAE Net HP	67 @ 4200 rpm
	Fuel/Air Supply	AFC fuel injection
TRANSMISSION & DIFFERENTIAL:	Type	Fully synchronized, transaxle
	No. Speeds	4 forward, 1 reverse
	Final Drive	Rear wheel drive, double-jointed axles
	Clutch	Single disc, dry
CHASSIS & SUSPENSION:	Frame	Unitized body/chassis, box-shaped side and cross members
	Front suspension	Independent, torsion bars with trailing arms and stabilizer
	Rear suspension	Independent, torsion bars with trailing and diagonal arms
	Service Brake	Dual brake circuit, power-assisted discs/drums. Inertia controlled pressure regulator, rear.
	Parking Brake	Cable operated on rear wheels
	Rim Size	5-1/2J x 14
	Tire Size	185 R14
ELECTRICAL SYSTEM:	Rated Voltage	12 Volt, 55 Amp alternator
	Battery	12 Volt, 54 Amp/hour
	Steering	Roller Type
DIMENSIONS:	Wheelbase	94.5 inches
	Length	177.4 inches
	Width	67.7 inches
	Height (Unloaded)	77.0 inches
	Ground Clearance (loaded)	7.9 inches
PERFORMANCE:	Turning Circle	37.1 ft. (curb to curb)
	Top Speed	75 mph
	Fuel Consumption* (California)	Highway: 25 mpg City: 17 mpg

*Based on 1978 EPA estimated mileage with manual transmission. Your actual mileage may vary, depending on where and how you drive, your car's condition and optional equipment.



©Volkswagen of America, Inc.