

# Why your next employee should be a Volkswagen.



1978 VW Window Van/Delivery Van

## It's resourceful.

You can pack a ton of payload into a VW Van's 176 cubic feet. Yet this remarkable work machine is less than 15 feet long. Which is a lot of inside for such a small outside.

So even though a VW Van is big enough for almost any job, it's also small enough to squeeze in where most trucks fear to tread. Like car-size parking spaces, and double-parked narrow streets.

The space in a VW Van is extraordinarily accessible.

There's an aisle between the front seats so you don't have to leave the van to get into the load compartment.

The back tailgate swings up, not sideways, so you can approach the rear from either side. (When you open the tailgate, it stays open.)

The side door slides open, so you can't smack it into cars, trucks, buildings or people, no matter how tight the fit. And it opens from inside or outside the Van, using only one hand. (The other hand will often be carrying something, right?)

The loading ramp at the sliding door is a short 19.7

inches (about knee-high) from the road. Which makes loading a VW Van about as easy as it can get.

## It works for less.

Like all Volkswagens, a VW Delivery Van or Window Van works on less oil. Less than 4 quarts. And between oil changes it rarely needs more.

You'll never have to buy anti-freeze. Or fill a radiator. Or repair a radiator. There is no radiator.

Of course, you buy regular, less expensive gasoline. And you'll find you'll get the kind of mileage you'd expect to get in an economy sedan. (48 km/gal — 30 mpg highway, 34 km/gal — 21 mpg city. \*)

Altogether, including gas, oil, tires and maintenance, your Volkswagen Van should prove to be a very thrift-minded employee.

And if you're like many Volkswagen owners, you'll probably drive it for a long time.

So before you ever load it up, you know one thing a Volkswagen Van can deliver.

VW economy.

\*Results based on Transport Canada approved test methods for standard transmission model. Your fuel economy will vary depending on vehicle load, optional equipment, how and where you drive, and the condition of your vehicle.



## It isn't fussy about working conditions.

Neither heat nor cold will keep a VW Van from your delivery appointments.

Because the air-cooled engine uses no water, it can neither boil over nor freeze up.

Even when roads are slick you can count on a Volkswagen Van. The rear brake circuit is equipped with a brake pressure limiting valve, to help prevent your rear wheels from locking and the front wheels have power assisted disc brakes for sure and quick stops.

High ground clearance makes it easy to get over rocky or washboard roads.

And the added traction of our rear mounted engine makes it easier to get through mud, sand or snow.

But just getting through isn't enough for any Volkswagen. That's why our Vans have double-jointed rear axles and radial ply tires for better road holding and a smoother ride.

And a 4-wheel independent torsion bar suspension system. Which allows each wheel to take each bump separately.

So even though you cart things around, our VW Van doesn't ride like an old crate.

## The Van that made automobile history.

The basic design of the VW Van was first developed 27 years ago. It has changed little since then, and for good reason: it simply works better than any other load carrying design.

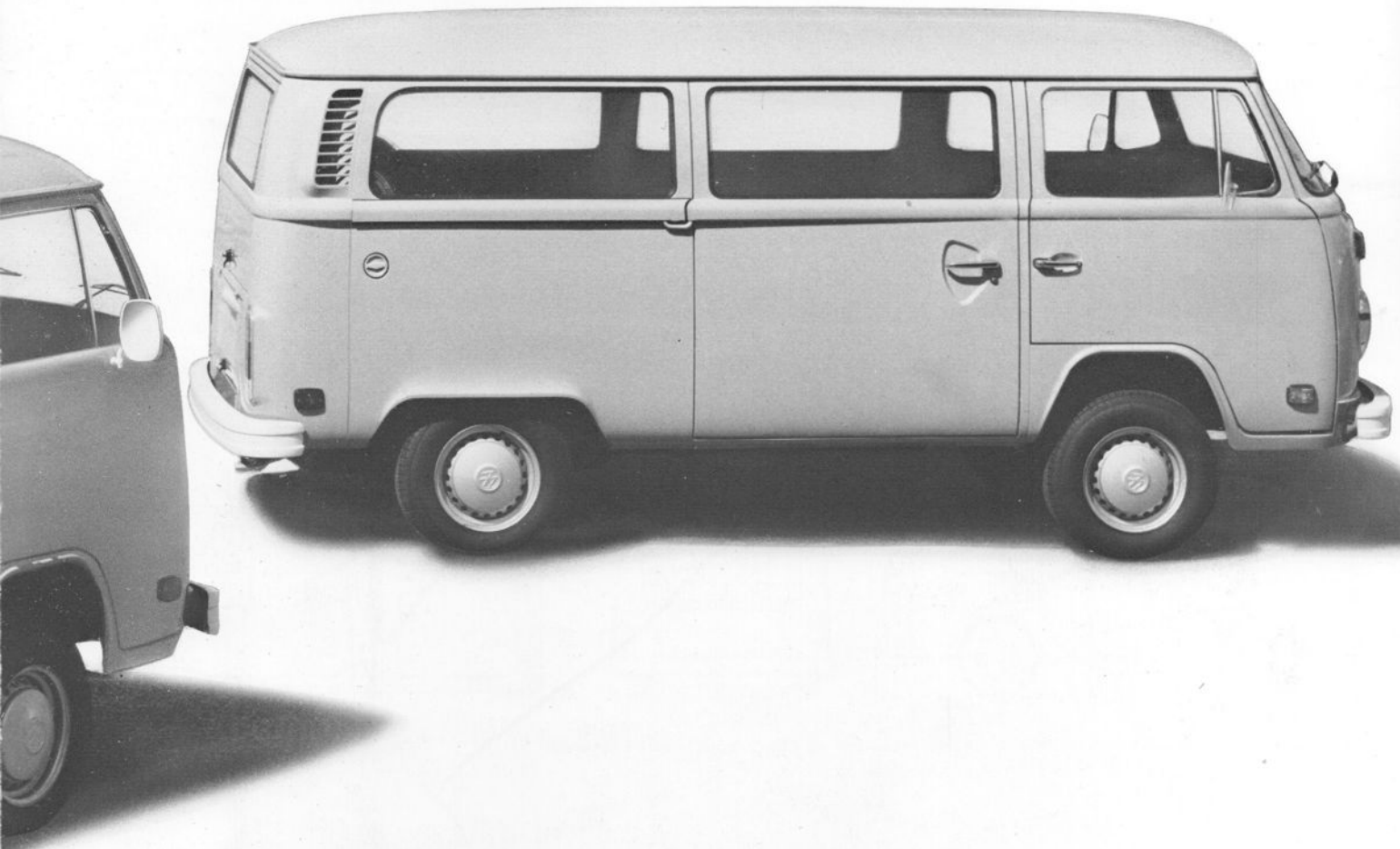
The VW Van is wide, easily accessible. Whether your choice is a Window Van or a Delivery Van, it is tough, handy, compact. Its lines are clean and functional, without frills or clutter to interfere with its basic purpose.

It is totally simple, and business people all over the world have grown to love it.

One thing the VW Van has changed is the way other manufacturers have come to look at van design. So today, you see a lot of vans on the road that are trying to look like VW Vans.

When you take a VW Van for a test drive, remember one thing: an idea that can turn a whole industry around has got to be a good idea.

And there's a lot to be said for driving the original.

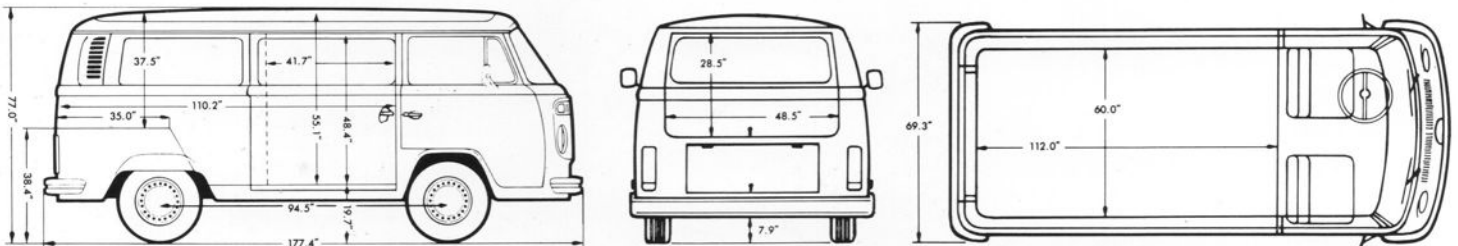


# Specifications

# 1978 VW Window Van/Delivery Van

<b>ENGINE</b>	Type	Air-cooled, rear mounted			
	No. of cylinders	Four, horizontally opposed, overhead valves			
	Bore & stroke	94 mm x 71 mm, 3.70 in x 2.79 in.			
	Displacement	1970 cc, 120.2 cu. in			
	SAE net hp @ rpm	67 @ 4200 rpm			
	SAE net torque	101.0 ft lbs @ 3000 rpm			
	Compression ratio	7.3:1			
	Fuel system	A.F.C. fuel injection (air flow controlled)			
	Fuel requirement	Regular gasoline			
	Fuel capacity	56 ℓ, 12.3 imp gal			
	Oil capacity	3.5 ℓ, 3.1 imp qts			
	Battery	12 V/63 Amp/h			
	Alternator	70 Amp			
	Type of ignition	Coil, distributor			
	<b>DRIVE TRAIN</b>	Type	Rear wheel drive, with two constant velocity joints per drive shaft		
Clutch		Dry, single plate			
Transmission		Fully synchronized four-speed			
Automatic		Three-speed automatic transmission with torque converter			
Gear Ratios		(manual) 3.78/2.06/1.26/0.82/R. 3.28 (auto.) 2.55/1.45/1.00/R. 2.46			
Final Drive		(manual) 4.57 (automatic) 4.09			
<b>CHASSIS</b>	Body	Unitized body, frame plates reinforced with side and cross members, front axle bolted to frame side members			
	Front suspension	Torsion arms with ball joints, torsion springs and stabilizer			
	Rear suspension	Double jointed axle with trailing arms and diagonal links, torsion bars			
	Braking system	Power assisted and pressure regulated disc brakes at front, drum brakes at rear, dual circuit braking system			
	Parking brake	Mechanical, effective on rear wheels			
	Rim size	5 1/2 J x 14			
	Tire type/size	Steel belted radial tires 185 SR 14			
	Steering system	Roller type with maintenance-free tie rods and hydraulic steering damper			
	Turning circle	Appr. 11.30 m, 37.1 ft (curb to curb)			
	<b>WEIGHTS:</b>	Dry weight	Window Van Appr. 2778 lbs., Delivery Van Appr. 2760 lbs.		
Payload		Window Van Appr. 2443 lbs., Delivery Van Appr. 2160 lbs.			
Permissible trailer weights		Braked; 2645 lbs.			
		Unbraked: 1323 lbs. Trailer tongue load: 110 lbs.			
<b>FUEL ECONOMY AND PERFORMANCE</b>	Fuel Economy*	Manual	Hwy.	48 km/gal	30 mpg
			City	34 km/gal	21 mpg
	Automatic	Comb.	39 km/gal	24 mpg	
		Hwy.	42 km/gal	26 mpg	
	Top Speed	Manual	127 km/h	79 mph	
			122 km/h	76 mph	
	Acceleration	Manual	0-80 km/h	50 mph	13.9 sec.
			0-80 km/h	50 mph	16.0 sec.

\*Results obtained using Transport Canada approved test methods, using standard transmission.  
Fuel consumption will vary depending on how and where you drive, optional equipment and condition of your car.



VW Vans are available in exterior colours of Pastel White or Sage Green. Both with Canyon Brown leatherette upholstery.

Volkswagen Canada Ltd. reserves the right to discontinue or change at any time, specifications or design, without notice. Always consult your Volkswagen dealer for the latest information.

Volkswagen Canada Ltd. 845 023 200 Printed in Canada 11/77 16/4 WD