

# **The VW Campmobile.**





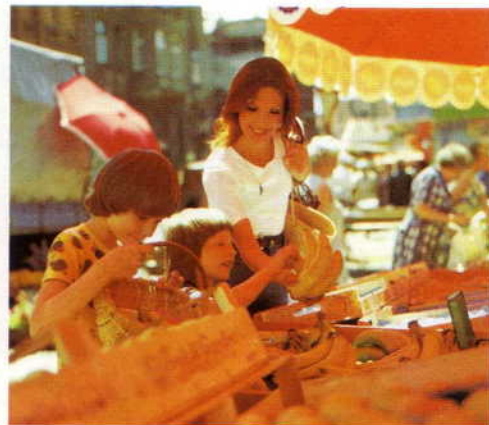
The VW Campmobile is a mobile holiday home. It wends its way through city traffic like a saloon and is just as modest in its parking requirements. On the motorway, it runs for hours at top speed. It climbs untiringly up mountain roads. Winds nimbly and

easily along steep serpentine roads. There's no thoroughfare too narrow for it. No lane too small. The VW Campmobile will get you through. And take you anywhere. The VW Campmobile has a chassis with individual wheel suspension,

## **The VW Campmobile – a**

and even a semi-trailing arm rear axle. Its springing has been carefully balanced. There is positive steering with hydraulic steering damper, a safety steering column, and a dual circuit brake system with disc brakes in front, drum brakes at rear and a brake





## modern mobile holiday home.

pressure regulator. All this gives it driving characteristics which not a few sporty saloons might envy. The VW Campmobile is a comfortable holiday home on wheels. The wood panelling of the interior is in dark-toned spruce. The furniture has an easy-to-

clean plastic veneer in spruce grain. The colourful fabric upholstery is hard-wearing and matches the warm wood tones. There are curtains on all the windows for privacy, and a ceiling light for pleasant illumination. A holiday house where you can really feel

at home. A holiday house with a living room which is the ideal travelling compartment for children – where they can play, eat or while away the time in some other amusing way.





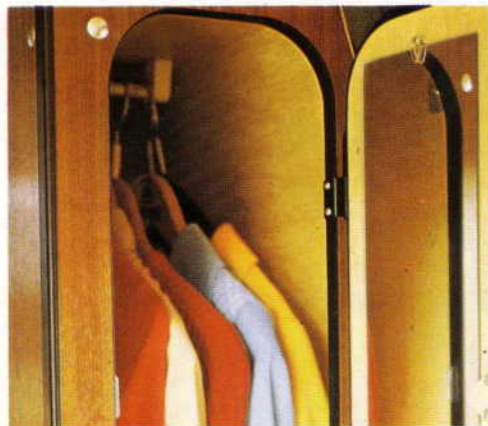
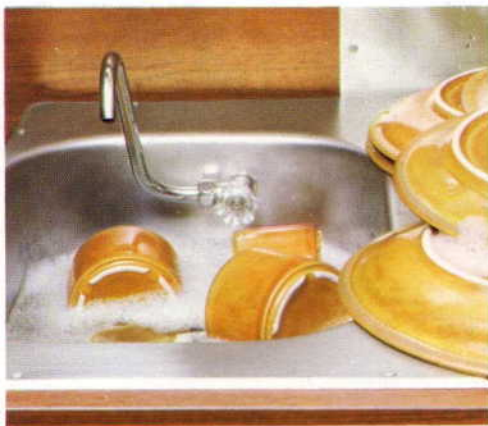
With the VW Campmobile, you are completely independent of hotels and restaurants. You are living in your own home. Cosy and comfortable. The VW Campmobile is furnished with an upholstered bench to seat two, and a table. Another seat is provided by the

front passenger seat. This can simply be turned 180° to face the other way. And, after an eventful day, when you turn in to enjoy your well-earned rest, it is no trouble at all to convert the living room into a bedroom. As you pull the seat of the upholstered bench

## The VW Campmobile –

forward, the backrest folds back to meet the mattress over the engine compartment to make a full-sized double bed. The bed-clothes are conveniently stored in the locker under the mattress. But there is plenty more sleeping accommodation. A child's bed





## your home away from home.

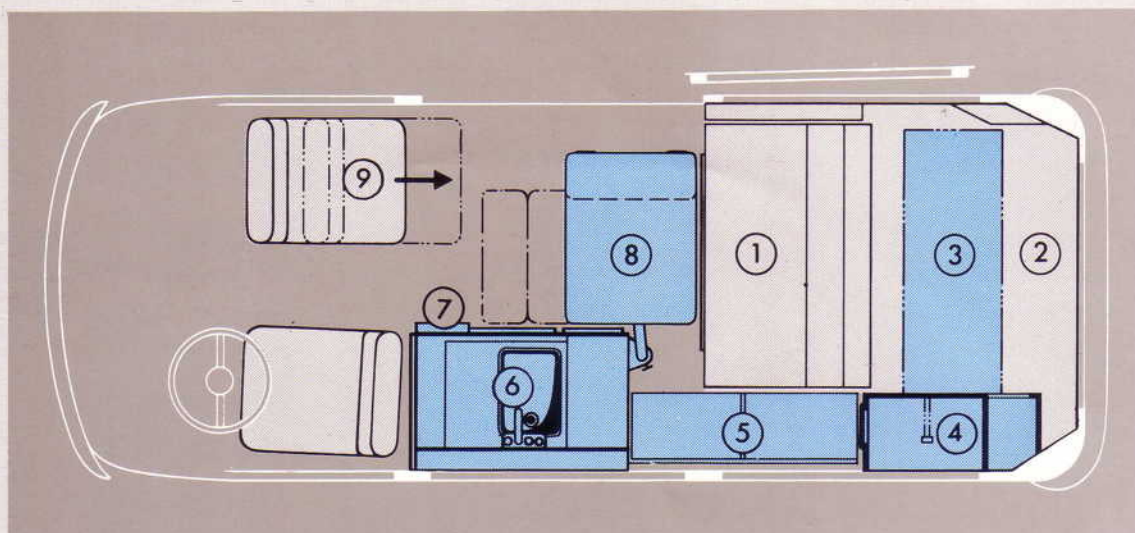
can be slung up in the driver's cab, over the seats. And there is another double bed under the elevating roof. Here you can take your afternoon siesta without having to rearrange the living room. In the VW Campmobile, you can be

your own chef. You can eat whatever you happen to fancy. You can cook like at home, on a two-ring gas-cooker (available at extra charge). Next to that, there is a stainless-steel sink, supplied with fresh water by a 24 litre tank and with drainage to the outside.

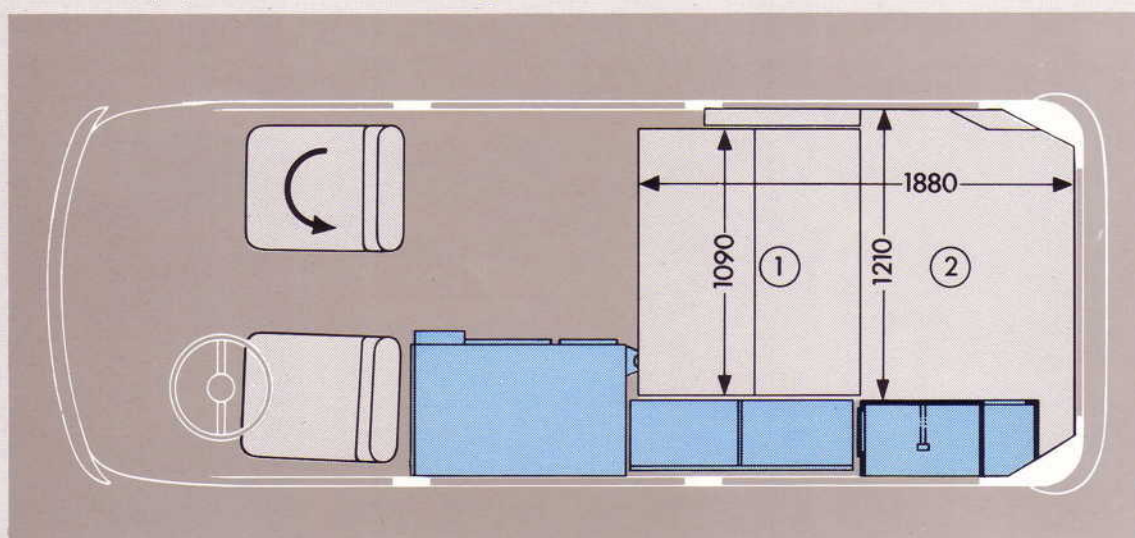
The water tank and gas bottles are accommodated in a cabinet under the sink. An icebox (refrigerator at extra charge) has also been provided.



### Standard equipment "P 21/P 22" for daytime



### Standard equipment "P 21/P 22" for nighttime



- 1 Two-seat rear bench
- 2 Upholstery over engine compartment
- 3 Roof locker
- 4 Wardrobe with 3 shelves
- 5 Icebox (refrigerator at extra charge)

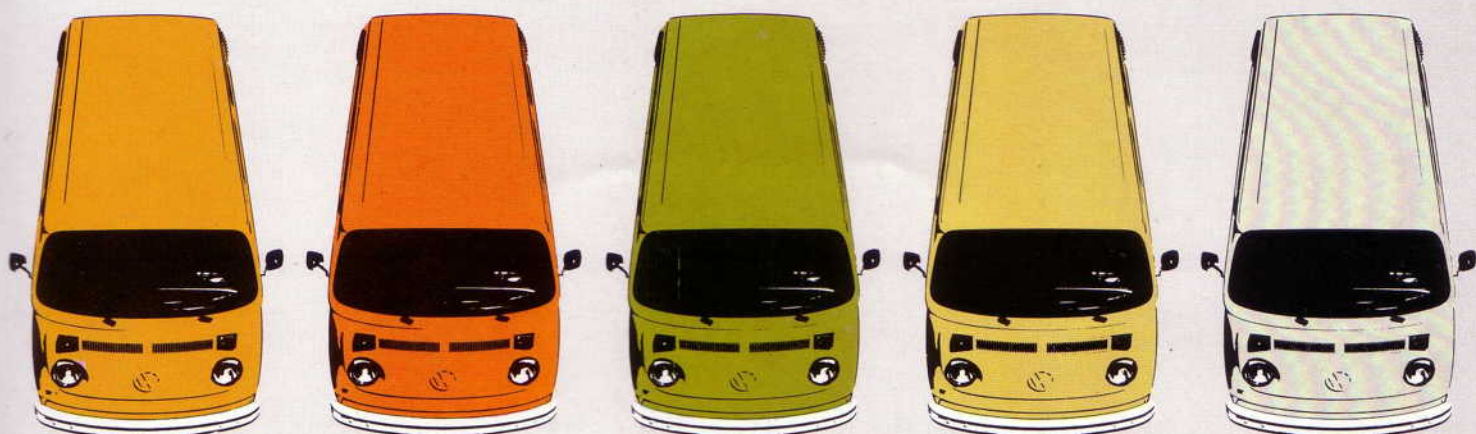
- 6 Kitchen unit with sink, drawers, water tank and space for gas bottles  
At extra charge: two-ring gas cooker and refrigerator (P 30)
- 7 Spare wheel
- 8 Swivelling dining table, with extension
- 9 Swivelling seat

## The VW Campmobile –

The VW Campmobile is available in 5 pleasant paintwork colours. A large elevating roof (P 22) can be supplied at extra charge. It is made of resistant fibre-glass. The walls are of weather-

proof canvas. The elevating roof is easy to raise and retract, and catches automatically in place. A large, free-standing tent is also available at extra charge for your VW Campmobile.





marino yellow 9156  
9157\*

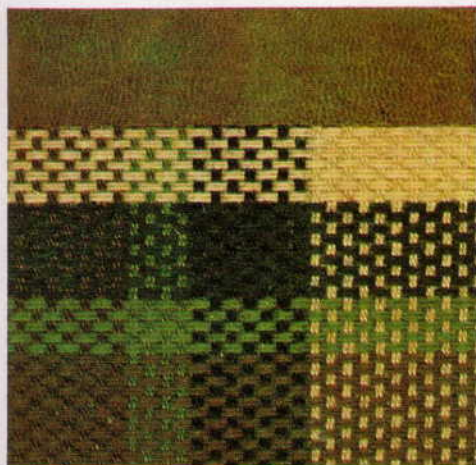
brilliant orange 9226  
9227\*

taiga green 9451  
9452\*

dakota beige 9826  
9830\*

pastel white 9926

\* with roof colour "pastel white"



camping brown-beige



-- 46 camping green-yellow



-- 34 camping green-red

-- 41

**Possible  
colour combinations.  
Equipment  
"P 21/P 22".**

**Exterior colours**

marino yellow

brilliant orange

taiga green

dakota beige

pastel white

**Upholstery**

camping brown-beige -- 46

camping green-yellow -- 34

camping green-red -- 41

**Roof colour**

pastel white

The roof colour "pastel white" is available at extra charge with the exterior colours "marino yellow 9157", "brilliant orange 9227", "taiga green 9452" and "dakota beige 9830".

Print processes do not allow exact reproduction of colours. This applies to the exterior colours as well as to the upholstery.

## its equipment and colours.

It enlarges the space of your holiday home, makes it more versatile and provides additional living and sleeping accommodation. The tent has a rubber ground-sheet and its big advantage

is that it can be put up independently of the vehicle, so you can drive away and leave it standing.

# Technical Data.

	VW Campmobile 1.6 liter engine	VW Campmobile 2.0 liter engine
Engine	four-cylinder, four stroke, horizontally opposed, air-cooled, rear mounted	
Capacity, cc	1584	1970
Output, kW <sup>1)</sup> at 1/min <sup>1)</sup>	37/3800	51/4200
DIN bhp at rpm	50/3800	70/4200
SAE bhp net	48/3800	67/4200
Maximum torque, Nm <sup>1)</sup> at 1/min <sup>1)</sup>	108/2800	143/2800
DIN mkg at rpm	10.8/2800	14.3/2800
SAE net lbs. ft.	74.5/2800	98.6/2800
Electrical system	12 V/45 Ah alternator with 50 amp. max. (= 700 watt)	12 V/45 Ah alternator with 55 amp. max. (= 770 watt)
Transmission via	fully synchromesh four-speed gearbox, or at extra charge (with 2.0 liter engine only) VW automatic transmission	
Wheel suspension and springing	individual wheel suspension and torsion bar springing	
Wheel location, front/rear	via cranked trailing links / semi-trailing arms	
Brakes, front/rear	disc / drum	
Tyres	diagonal 7.00 - 14.8 PR	radial ply 185 R 14 C
Wheel base, mm (ins.)	2400 (94.5)	
Track, front/rear, mm (ins.)	1395/1455 (54.9/57.3)	
Length/width, mm (ins.)	4505/1720 (177.4/67.7)	
Height without additional roof fittings, mm (ins.)	1955 (77.0)	
with elevating roof, mm (ins.)	2035 (79.11)	
Unladen weight, kg (lbs.)	1475 (3252)	1495 (3296)
Permissible axle load, front/rear, kg (lbs.)	1010/1270 (2227/2800)	1010/1270 (2227/2800)
Payload, depending on distribution up to, kg (lbs.)	775 (1708)	755 (1664)
Permissible total weight, kg (lbs.)	2250 (4960)	2250 (4960)
Maximum speed, km/h	110	127
mph	68 <sup>2)</sup>	122 (with automatic transmission) 79, 75.5
Fuel consumption <sup>2)</sup> , l/100 km	11.4 (regular fuel)	11.8 (regular fuel)
mpg imperial	24.8	23.9 13.0, (with automatic transmission) 21.7

<sup>1)</sup> New unit for indication of engine, output and maximum torque.

<sup>2)</sup> With half payload, at steady <sup>3</sup>/<sub>4</sub> of top speed, plus 10 %

## Cab equipment.

A selection of standard features:

Plastic lined throughout, footwells lined with plastic foil.  
Floor lined with insulating carpeting. Wheel housings damped with rubber. Further insulation and damping in cab.  
Driver's seat and backrest adjustable over full range. Fabric seat covers. Safety door locks. Coat hooks. Armrests.  
Safety inside mirror. Ashtray. Grab handle for front seat passenger. Heating and ventilation system adjustable over wide range. Ventilation air flow adjustable in all directions. Adjustable draught-free ventilation system in cab doors. Particularly effective windshield defroster. Glove compartment. Non reflecting instrument panel padding.  
Fuel gauge. (Special Campmobile equipment see main text.)

## A selection of optional items at extra charge.

Halogen headlights. Two-tone paintwork. Laminated windscreen. Tinted glass windows in cab. Two convex mirrors outside. Vent wings in cab. Lockable tank flap. Lockable engine compartment cover. Heatable rear window. Towing bracket. Automatic transmission (only in conjunction with 2.0 liter engine.) Radial ply tyres (standard on 2.0 liter models). Brake servo (standard on 2.0 liter models). Day/night rearview mirror. Lockable glovebox. Head restraints for all seats in cab. Safety belts with automatic coil-up. Stationary and auxiliary heater. Warning light for dual circuit brake combined with hand-brake signal lamp. Complete radio system (various models). Fresh air blower.

Volkswagen are delivered to 120 countries in the world over. Obviously, traffic laws and type-approval regulations tend to vary from country to country. You may find, therefore, that the models and equipment actually offered for sale differ from the data given in this brochure. So please ask your nearest VW dealer for information regarding the range of VW models and equipment valid for your country.