



RICHARD HOLDSWORTH



**Volkswagen
Motor
Caravar**

H O L D S W O R T H

Layout 1

Here's the motor caravan that wins top marks for easy-to-live with features right throughout the year. As an estate car, as a delivery van and, of course, as a motor caravan.

Let's look at the motor caravan side first. To begin with we realised that many people buy a motor caravan without an elevating roof. If you haven't got an elevating roof you can't stand up and you'll appreciate our kitchen unit because you can sit at it as easily as you can stand at it. We fitted a foot operated pump and a proper water tank. And the water tap is where it is most needed—next to the cooker. Then there's a neat plastic water bowl that can be moved around the vehicle to wash up where it's easiest.

The cooker itself has a winning way about it because it can be removed from the vehicle and used outside for real cooking freedom. A great idea when it's warm and sunny. And when it is warm and sunny, an insulated food box keeps perishable foods cool and fresh.

We concentrated on good commonsense ideas when it came to your beds too. We decided upon a low level double bed to keep the engine deck clear for children to sleep. All you do is ask for the optional engine deck cushions. This way a man with a family doesn't have to invest in an elevating roof to give everyone a bed for the night.

Of course, we'll only be too pleased to install our elevating roof and two tapered bunks. Either now, or at a later date.

When it comes to using your motor caravan as an estate car, you've got a comfortable bench seat at the back for up to three. Opposite is a corner seat and this folds out for a second passenger when needed, and folds away when not.

Other features can be taken for granted. Plastic laminate tops to all work surfaces; curtains all round in a choice of colours to match the Scandinavian weave seat upholstery. And one other thing—our seat cushions are genuine Dunlopillo just to make sure you get the very best night's sleep.

To sum up. You've got an estate car to seat as many as seven. We've given you unequalled floor space to take care of the things no car could carry. And, finally, you've got some of the extra comforts that make so much difference when you actually get down to enjoying your Volkswagen as a motor caravan.



VOLKSWAGEN

Layout 2

Now this is where we really turn your head when it comes to luxury features.

For a start, you've got just about every one of the fittings included in Layout 1. The brilliant basic layout of the seats for carrying a large family, and uncluttered floor space when you want to carry a load. You've got all the nice little features such as built-in water tank, lift-out cooker, and insulated cool box (full refrigerator optional on Layout 2).

And on Layout 2 we give you some very special features.

The full 72" double bed folds out from over the engine deck leaving lots of floor space to move around in. The fact that our bed extends over the engine deck is nothing new, but the clever design puts it only 24" from the floor so going to bed is not a job for the athletically inclined.

If you have the optional elevating roof, you'll find this a dream too. Spring loaded arms look after the lifting, and concertina sides fold automatically on the way down.

The cooker is the same versatile two burner and grill and it still lifts out to let you cook outside if you wish. (Actually, the cooker is positioned just inside the doorway and can be used outside without moving it at all.)

Inside the doorway on the other side is a stainless steel sink and drainer served by a foot operated water pump, and the built-in water tank has the same gigantic filler cap for cleaning out at the end of the season.

There's an unbelievable amount of storage space in all Richard Holdsworth Volkswagen motor caravans. Layout 1 and Layout 2 share the same seat bases and this is where all your bulky clothing and bedding goes. There's a top storage locker over the engine compartment, and wardrobe for your hanging clothes.

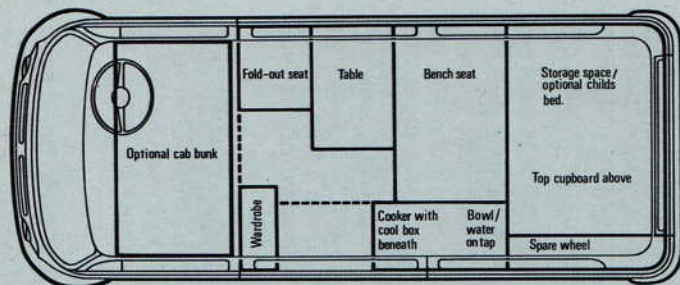
Layout 1 has a cleverly designed kitchen unit incorporating your cool box, crockery rack and spacious shelf for other items of food. In Layout 2 we stretched this even further and there's an added bonus in the form of a crockery basket that lifts out to double as a mini drainer.

Now your only problem is deciding what's it to be—Layout 1 or Layout 2.



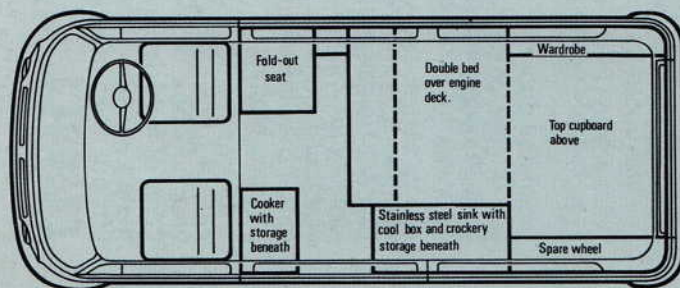
Specification

Layout 1



Equally ideal for fixed or elevating roof models, when all operations can be carried out sitting or standing. Kitchen unit has all facilities grouped together. Two burner cooker with grill, removable for outside use. Portable wash bowl. Crockery storage beneath. Gas cylinder stored in engine compartment. Fully enclosed wardrobe. Rear seat combines with fold-out seat and table to form double bed measuring 72" x 45". Low level bed leaves engine deck free for extra child's bed.

Layout 2



A bonus for the motor caravanner who wants more luxurious fittings. Stainless steel sink and drainer with waste outlet. Separate crockery compartment with lift out storage basket which doubles as mini dish drainer. Two burner and grill cooker unit inside vehicle doorway. Cooker removable for setting up outside. Storage beneath for two gas cylinders, and shelf for saucepans. Wardrobe hanging space over engine deck. Forward-facing rear bench seat with hinged backrest forms double bed over engine deck measuring 72" x 45". High level bed leaves maximum floor space.



Both layouts have water on tap drawn from our specially designed 6 gallon water tank. Water tank housed within the vehicle with wide filler cap for ease of cleaning. Foot operated pump. Insulated cool box cupboard with door liner moulding for bottles and dairy food. Forward-facing rear bench seat with storage beneath seats 3. Single seat behind driver folds out to provide fourth seat around table. Storage beneath. Hinged table with screw in leg. Roof storage compartment at rear. Dunlopillo foam cushions covered in hardwearing rayon mix. Zips fitted for easy removal and cleaning. All round curtains in colours to match. Curtain retaining straps. Velcro fastenings. Silent Gliss aluminium curtain track with nylon hooks and gliders. All working surfaces in Italian Planika plastic laminate. Woodwork is craftsman made in light Sapele timber treated with melamine based varnish. Full insulated trimming includes: Vinyl headlining; trim panels in textured, wipe clean, vinyl; Nairn 'Cushionflor' with asbestos backing; engine deck (including engine deck front) lined; cover on spare wheel; window surrounds trimmed in white vinyl. Side windows in curved safety glass with heavy duty rubber mouldings. Weathershields elevating roof. Four tensioned springs concealed in lifting arms. Roof top insulated and lined. Roof ventilator as standard. Concertina side material in nylon reinforced PVC, electronically 'welded' on all seams.

HEIGHT—Fixed roof: 6' 5"/1.960m. **Elevating roof:** 6' 9½"/2.070m
LENGTH: 14' 9"/4.500m. **WIDTH:** 5' 9½"/1.770m.

Extras

Elevating roof. 2 roof bunks. Cab hammock bunk. Centre cab seat. Refrigerator (Layout 2 only). Flyscreens. Roof rack. Awning tent. Spare wheel mounting bracket and cover etc.

Richard Holdsworth Conversions Ltd.

Loddon Bridge Road, Woodley, Near Reading, Berkshire. Telephone: Reading 692900