

# The VW Microbus.

**AUTOHAUS ZERBE**  
Volkswagen - Händler  
6503 Mainz - Kastel  
Wiesbadener Str. 64-66 - Tel. 2156 - 2158

# **The VW Microbus.**

# See it.

It's not only good to look at but has qualities one looks for. For instance the surprisingly compact, handy shape, which lets you slip into any parking space. Or the astonishingly large, luxu-

rious interior, a comfortable fit for 9 people. It is often compared to a limousine, but this is really a bit unfair. To the limousine, that is.

# Drive it.

Once again we've gone a good bit further along the road of safety and driving luxury: Now you can have the VW Microbus with automatic transmission if you choose the more powerful en-

gine, the 1700 cc. This makes driving even simpler; and even safer and more convenient.

# Choose it.

You can have the VW Microbus in versions seating seven, eight, or nine. It's just a question of what you need and how the seats are arranged. Furthermore you can have each of the three ver-

sions with regular and de luxe appointments. No matter which version you pick, you will have a winner.

# Have it.

It's easy to have one, thanks to VW Financing, VW Insurance Service, and VW Leasing. And it's easy to keep up, thanks to VW Service, genuine VW Spare and Exchange Parts, VW Weekend

Service, and VW Computer Diagnosis.

Because naturally when you have a VW Microbus, you have all the advantages of VW.

# Love it.

It has everything that makes a Volkswagen a Volkswagen: VW Quality, VW Dependability, VW Economy. But that's not the only reason it has become the best-selling microbus of its class in

Germany. The people who own one also love it because it's so kind to people: it doesn't treat passengers like crates, or chauffeurs like lorry drivers.

# Buy it.

It's available with two different engines and transmissions (shift or automatic) with five different upholstery styles and six paint colours. To make your decision easier we've listed the wealth

of engineering detail on the VW Microbus as clearly as we could: now you can pick out with ease the model and the colours that suit you.





## The VW Microbus: see it.

And this because it comes in colours as handsome as you'd find on a saloon. And because its shape is handier and more compact than that of almost any vehicle in its class. And because its looks are pleasing, the more so since we've improved them once again.

The first thing you notice from the front about

the new styling is the more powerful bumper (And it has its counterpart in the rear.) In the deluxe version it also carries useful black rubber moldings.

We have also fitted a deformable element, which works like an impact absorbing zone, taking some force out of a collision.





## Very inviting from outside.

The turn lights are better placed now — next to the air intake grille. And the footboards have been moved inside the body. Looks more modern.

But the people who are expected (or allowed) to drive it find it inviting, too. Because even six-footers can get in and out with ease through the huge sliding doors. And you can tell by the look

of it that it won't shake and jolt its passengers, but will transport them with luxurious smoothness.

And remark that this huge saloon will slide easily into the parking space for any ordinary saloon. That too is an inviting prospect.





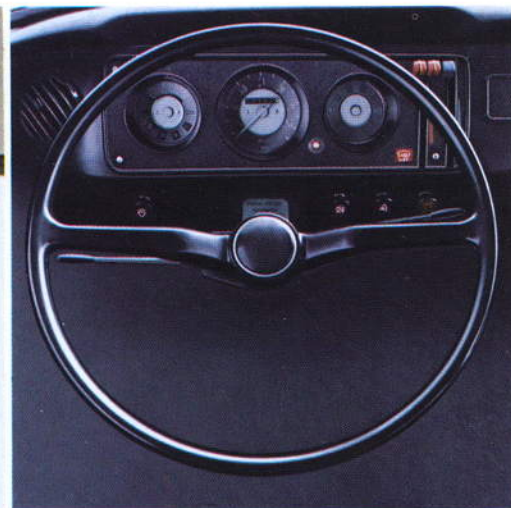
## The VW Microbus: see it. It's also

Here's an interior that has the qualities of a comfortable passenger car — in fact even more of the most important quality, namely room for passengers —, but it's built for utility from stem to stern. Not an inch goes to waste, because it omits such outside frills as tail fins or gracefully sweeping wings. It makes itself useful wherever it can, and that's good for your business. The outgoing interior doesn't really show what it can do until you invite 9 people for a ride at once.

The great thing about it, in other words, is not only its outward smallness but its inward largeness.

One thing you'll notice when you take the driver's seat: you'll be surprised how soon you forget you're handling a transporter. Because the VW Microbus offers you all the luxury of a saloon: seat comfortably upholstered and adjustable (the back, too); your all-round visibility is guaranteed by no less than 34 sq. ft. of glass surface,





## very outgoing from inside.

blocked, and your safety is assured by such standard features as safety steering column, padded dashboard with non-dazzle dials, and the padded sun vizors.

And if you take a passenger seat, you'll notice various things, too. To begin with, the easy access through the sliding side door, which is self-arresting. Then the comfortable seats with shoulder-high backs and generous depth. Finally, the amenities of a regular saloon: good air, thanks

to the newly improved, easily adjustable heating and ventilation; the first-class sensation of travelling without baggage but in luxury, thanks to the 35 cu.ft. of luggage space, the plastic-trimmed interior, and the sound-insulating carpet on the floor, and of course all the many little things like coat-hooks, grab handles and safety straps, armrests, and ashtrays, all particularly important on long trips.

In short, the VW Microbus is big in everything.





## The VW Microbus: drive it. Faster, more

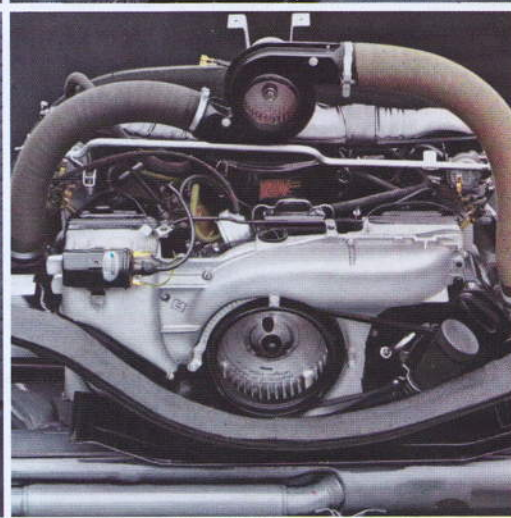
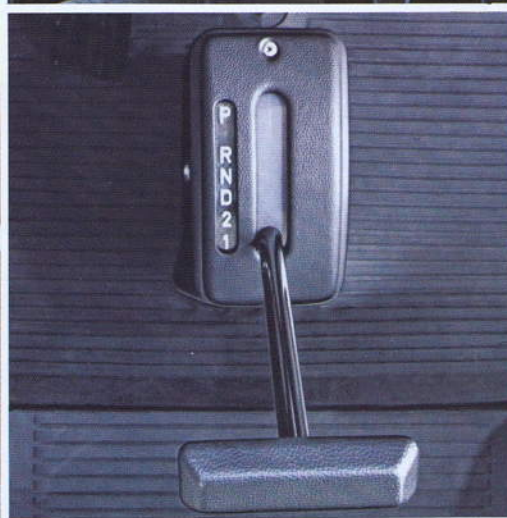
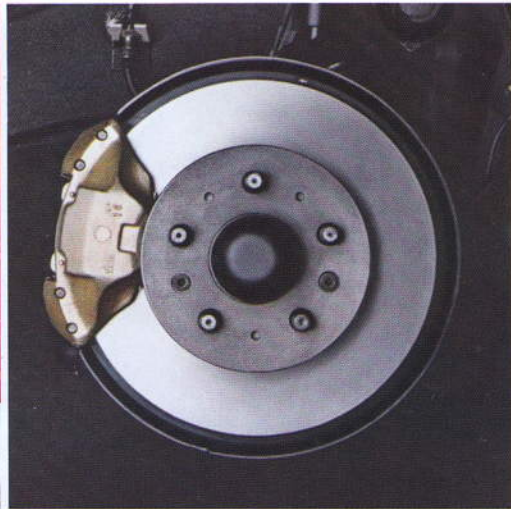
This is brand new: Now you can have the VW Microbus (in the 1700 cc version) with the tested VW automatic transmission. This makes driving even easier and safer. And makes the Microbus even more of a passenger saloon — particularly welcome in a car that does most of its work in city traffic.

This is not quite so new: For a year now the VW

Microbus has been available with the more powerful 1700 cc engine. That makes it not only faster (the 74 hp deliver a top speed of 77 mph) but more flexible — with half a payload, the more powerful engine accelerates from 0 to 50 mph in 16.4 seconds. And that in turn means more safety.

This has proved itself for years in the VW Microbus: the rugged chassis with its individual wheel





## quietly, and now, if you like, automatically.

suspension, trailing wishbone rear axle, and transverse stabilizer guarantee outstanding road holding. (Once again a matter of greater safety.) Then there are the axle load ratio, almost unchanging even under burden, and the torsion-barsprung wheels; the firm, unswerving steering (with safety steering wheel and steering column); and the dual brake system (with disc brakes in

front, brake-pressure limiter and, in the 1700 cc version, brake booster) — these give the VW Microbus its great margin of safety. And thus the assurance that you can not only drive it fast and easily, but put on the brakes fast and easily, too.





## The VW Microbus: choose it. With seven or

Properly speaking, the VW Microbus is an eight-seater. But for a little more or less money you can have it as a nine- or a seven-seater; with standard fittings or in the de luxe version. It all depends on how many passengers you want to carry, and how comfortable you want to make them.

The seven- and nine-seater versions differ only in the seating arrangements (2-2-3 or 3-3-3 instead of 2-3-3 or 3-2-3); the differences in the L version are more substantial.

The Microbus L is even smarter outside — all-





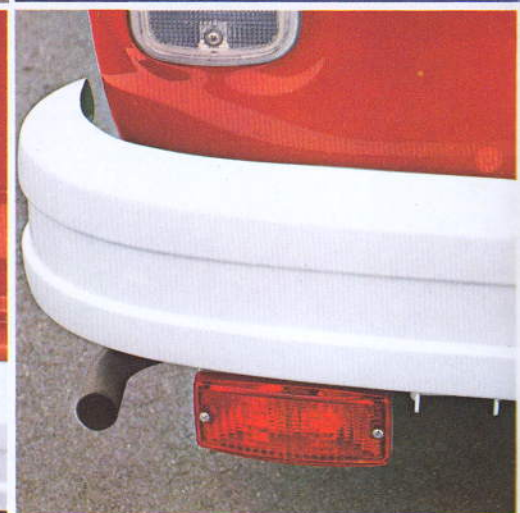
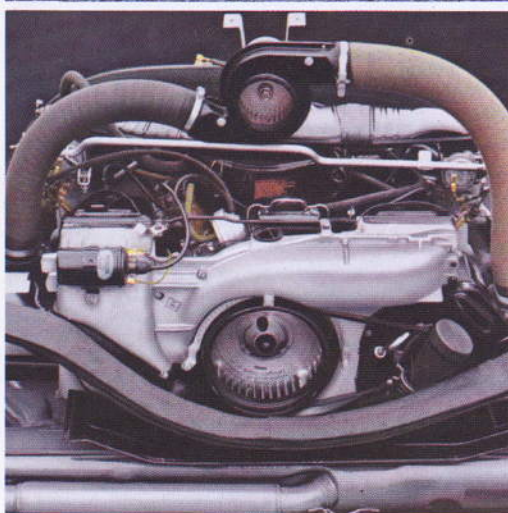
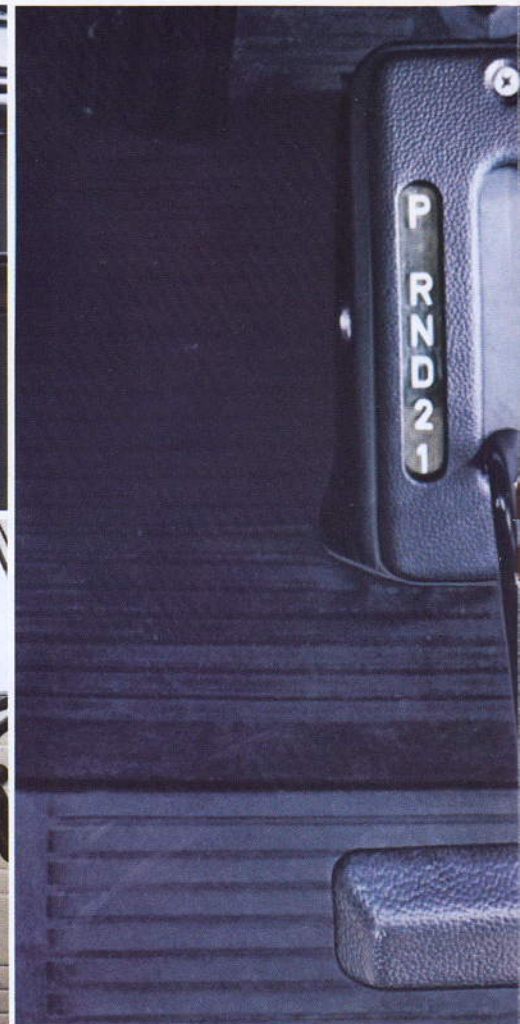
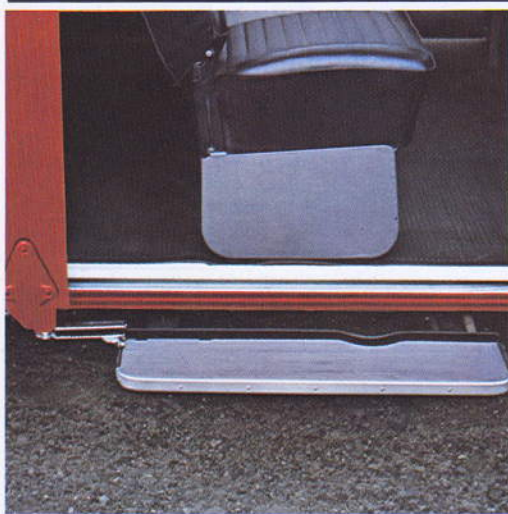
## **eight or nine seats, standard or de luxe.**

round molding, two-colour paint job, the rubber molding (not merely ornamental but useful) on the bumpers, the chromium VW emblem.

And it is even more luxurious inside — crank-set steel sun roof, new speedometer with trip mileage indicator, electric clock, vent wings in the cab windows, and napped carpeting in the luggage compartment.

In short, the luxury benefits driver and passengers alike.





## The VW Microbus: choose it. In a special

As to our opinion, you will be glad about the many extras available for the VW Microbus as well. But sure you prefer that we present the wide range of extras in a more clearly arranged way.

That's why we have taken into account two different criteria — comfort and bad weather — and arranged 2 complete packages of extras.

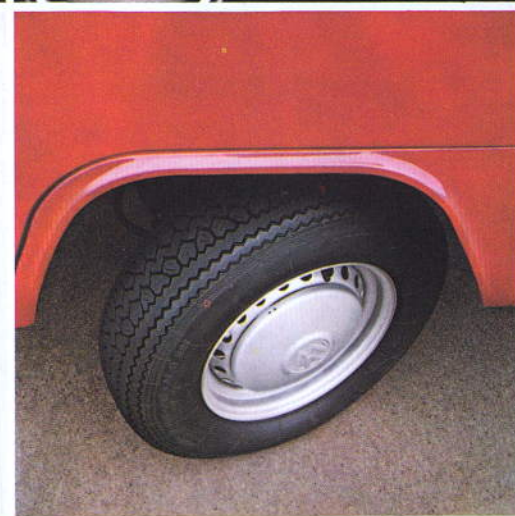
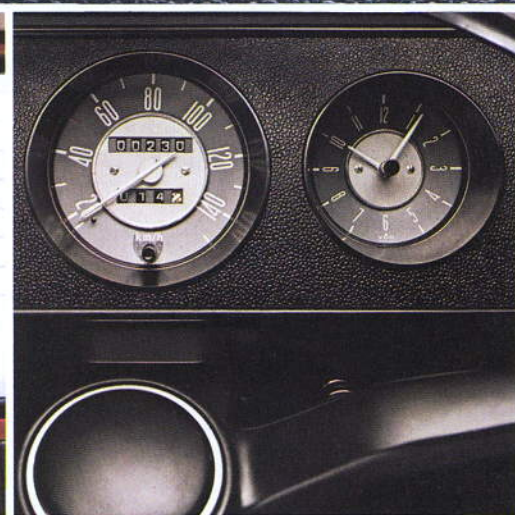
And if you specify how much more luxury or extra safety you'd like to have just when ordering your VW Microbus all the extras in the packages

are not only expertly installed before the delivery of your VW Microbus — but the cost amounts to nothing!

Your get more with the luxury (or M-) package: Trip mileage recorder, rubber mouldings on the bumpers, vent wings in the cab windows, 2 reversing lights, and a clock.

And for all all-weather drivers we provide the following package: Windscreen wiper intermittent switch with automatic wash-wiper, halogen





## version with one of its extra packages.

fog lights, fog tail light.

Of individual extras that you can add to the VW Microbus as purse and taste dictate, there are: Padded dashboard, heatable rear window, head restraints, fresh-air blowers, stationary and auxiliary heaters. And of course the more powerful 1700cc engine and the automatic transmission.

In particular, your punctual staff will be glad about the trip mileage recorder and the clock.

The steel sliding roof — standard on "L" mo-

dels —, also well matches the standard version of the VW Microbus. Radial-ply tyres as well!

And in order to make comfort perfect — a special step shouldn't be missing, automatically swinging in or out whenever the door closes or opens.

The car radio keeps in good spirits for your job and supplies information on the way.





## The VW Microbus: have it. And with it a

The Volkswagen is the one and only car in the world that can afford the VW Computer Diagnosis. It takes about half an hour. Once your VW has been checked, up to 88 loads will have been taken off your mind.

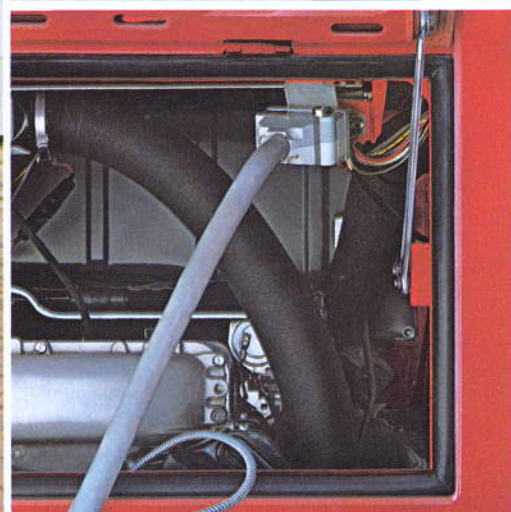
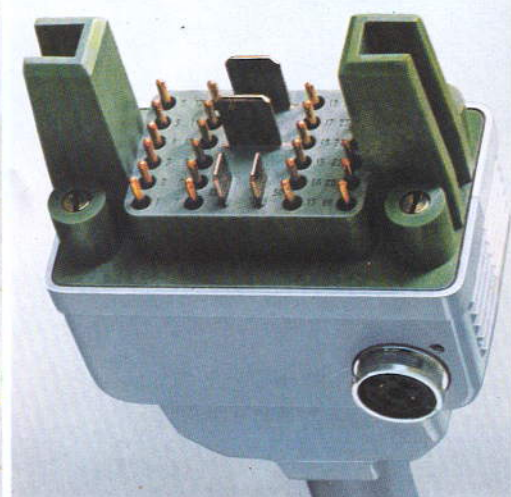
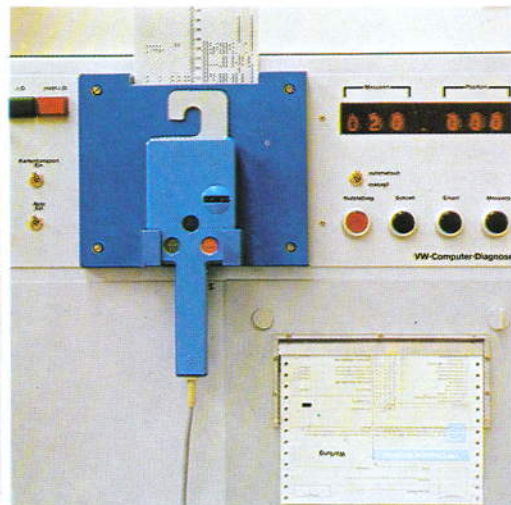
The VW Computer Diagnosis is a revolution in car servicing: as small as an electric socket and

as big as VW's huge service network.

Every new VW comes equipped with this electric socket. The cables of an electronic network are connected there. When inquiring after your car's health you are given up to 88 accurate answers.

The computer making the fully automatic





## direct line to the Diagnosis Computer.

checks at your VW dealer's cannot make a mistake, neither while counting nor while jotting down results.

On the printed Diagnosis Form you will see that really everything was checked. And what really is in order. And what really is not.

Because the VW Computer Diagnosis works so

fast it is not even expensive. And — since you are handed over your VW plus coupons for 4 gratuitous VW Computer Diagnoses — the first 4 will cost no more than the time they take.





## The VW Microbus: have it. And

Having a car from VW has always been rather special.

### Advantage No. 1: VW Quality.

Every VW is sturdy in workmanship and therefore dependable, thrifty, reasonable-priced, economical, and high in resale value. Naturally that goes for your VW Microbus, too.

### Advantage No. 2: VW Service.

VW has one of the biggest and most closely meshed service networks in Europe. And this means fixed prices for all genuine VW Spare and Exchange Parts, quick repairs, which means low labour charges, outstanding maintenance, and

the computer diagnosis. All this too goes for your VW Microbus.

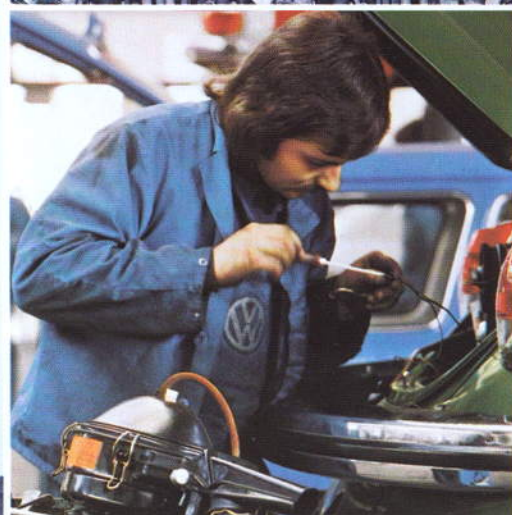
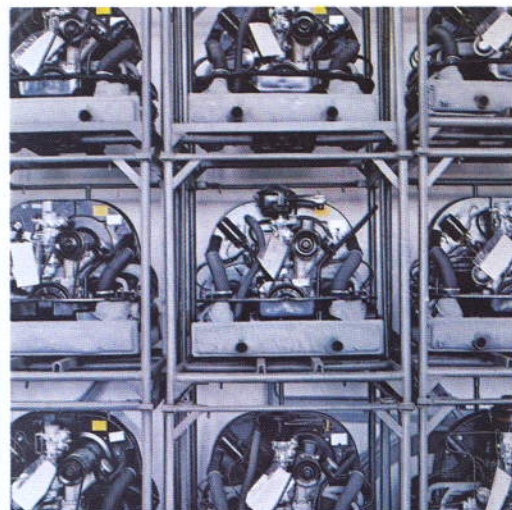
### Advantage No. 3: VW Financing.

VW supplies you not only with cars but with the money to buy them. On easy terms and with little red tape, through VFG, the VW Finance Company. And if you already have a car, every VW dealer takes used cars in trade. Why not yours?

### Advantage No. 4: Insurance.

When you buy your VW why shouldn't you buy VW Insurance Service (VVD) as well. You get all-European insurance. And you get all-European service — free of charge even. So you buy ad-





## many advantages to boot.

vantages: VVD pay the repair costs insured direct to the VW workshop, to give you just one example. You only have to be rightly insured. With VVD and their all-European Claim Service.

### Advantage No. 5: VW Leasing.

A businessman can do a good stroke of business with VW by not buying his new car but hiring it. This means he can invest this capital in other business. And he saves labour time by hiring the service along with the car. You see, leasing is a particularly modern form of hire. At the same time he can get the full use of the car just as if it were his own. This works for a VW Microbus, naturally,

the same as for any other VW.

### Advantage No. 6: VW Emergency Service.

A VW owner is seldom alone; and even less often left to himself if he has the misfortune to suffer a breakdown on a Saturday, Sunday, or holiday. There are some VW shops that stay open in the Federal Republic of Germany on any given day (from 10 a.m. to 4 p.m.). You can get the schedule with the respective addresses and phone numbers from any VW dealer, and then you'll always know where the nearest emergency service is — for you or for your drivers.





## **The VW Microbus: love it.**

There are many reasons for being fond of the VW Microbus. The passengers like being able to get in without acrobatics, sitting uncramped, feeling at ease on the road, seeing a lot of the scenery, and being surrounded by the invitingly appointed interior, with ashtrays handy, coat hooks, grab handles — precisely the luxury of a touring saloon on tour.





## Because it's so kind to people.

And the owner appreciates that it's reasonable in first cost, economical in upkeep, that he needs no extra large garage.

And that it really labours for ten — for the driver, the eight passengers, and the owner.



# Buy the VW Microbus. The model

Models	Engine and electrical system	Transmission	Running gear	Performance
<b>1600 cc</b>	Air-cooled, four-cylinder four-stroke flat four engine mounted in rear. Capacity 1584 cc. Output 37 kW at 4000 1/min. <sup>1)</sup> (SAE 60 bhp at 4400 rpm). Compression ratio 7.5 to 1. Maximum torque 81.7 ft. lbs. at 3000 rpm (SAE). Single down-draught carburettor with automatic choke. Thermostatically-controlled fan air cooling. Oil cooler. 12-volt electrical system. 45 Ah battery. Early cut-in generator with max. output of 38 amps. (approx. 540 W).	Via clutch, full baulk-synchromesh four-speed gearbox, differential and double-joint drive shafts to rear wheels.	Suspension by means of torsion bars front and rear combined with double-acting telescopic shock absorbers. Wheel suspension and location by means of cranked trailing links up front and semi-trailing arms at back. Torsion-bar stabilizer on front axle. Hydraulic steering damper and safety steering column. Dual-circuit brake system with disc brakes up front and deceleration-sensitive brake pressure regulator. Tyres: 7.00-14 8 PR; Microbus "L" models: 185 R 14 C (radial-ply).	Maximum speed 68 mph. Optimum hill-climbing ability on good roads, fully laden and in first gear: 1:3.8 (26%). Consumption <sup>2)</sup> (regular fuel) 24.8 mpg imperial (11.4 l/100 km).
<b>1700 cc</b>	Air-cooled, four-cylinder four-stroke flat four engine mounted in rear. Capacity 1679 cc. Output 49 kW at 4800 1/min. <sup>1)</sup> (SAE 74 bhp at 5000 rpm). Compression ratio 7.3 to 1. Maximum torque 85.3 ft. lbs. at 3400 rpm (SAE). Twin down-draught carburettors with automatic choke. Thermostatically-controlled fan air cooling. Oil cooler. 12-volt electrical system. 45 Ah battery. Alternator with output of 55 amps (approx. 770 W). Differences on models with automatic transmission: Output 46 kW at 4200 1/min. <sup>1)</sup> (Din 62 bhp at 4200 rpm). Max. torque 85.3 ft. lbs. at 3200 rpm (DIN).	Via clutch, full-baulk-synchromesh four-speed gearbox, differential and double-joint drive shafts to rear wheels.  Optional at extra charge: automatic transmission with hydrodynamic torque converter and automatic three-speed epicyclic gears.	Suspension by means of torsion bars front and rear combined with double-acting telescopic shock absorbers. Wheel suspension and location by means of cranked trailing links up front and semi-trailing arms at back. Torsion-bar stabilizer on front axle. Hydraulic steering damper and safety steering column. Dual-circuit brake system with disc brakes up front and deceleration-sensitive brake pressure regulator. Tyres: 185 R 14 C or 185 SR 14 reinforced for the de Luxe models (radial ply).	(Figures for automatic models in brackets.) Maximum speed: 78 mph/125 km/h (75 mph/120 km/h). Optimum hill-climbing ability on good roads, fully laden and in first gear: 1:3.6 (forward 1:4.5). Consumption <sup>2)</sup> (regular fuel): 21.8 mpg imperial, 12.9 l/100 km.

<sup>1)</sup> New unit for indication of engine output in accordance with international agreements.

<sup>2)</sup> With half payload at steady 3/4 of top speed, plus 10%.



# that's just right for you.

Weights and dimensions	Special features of equipment	Optional extras at extra charge
<p>Wheelbase: 94.5 ins. (2400 mm). Track front/rear: 54.9/57.3 ins. (1395/1455 mm). Maximum external length/width/height: 177.4/67.7/77.0 ins. (4505/1720/1955 mm). "L"-model 178.9/69.3/76.4 ins. (4545/1760/1940 mm). Average length/width/height of passenger compartment, incl. luggage area: 110.2/59.5/55.1 ins. (2800/1512/1400 mm). Capacity approx. 177.0 cu. ft. (5 m³). Average length/width/height: of luggage compartment 27.6/57.1/31.5 ins. (700/1450/800 mm). Capacity approx. 35.3 cu. ft. (1 m³). Basic models/"L"-models. Max. permissible load: 4960/5026 lbs. (2250/2280 kg). Unladen weight: 2998/3097 lbs. (1360/1405 kg). Axle loads front/rear: 2227/2800 lbs. (1010/1300 kg). Max. permissible trailed load for braked trailers of all types: 1764 lbs. (800 kg). Max. roof load: 220 lbs. (100 kg).</p>	<p>Two rear view mirrors. Steps below cab doors. Safety door handles. Chromed hubcaps. Preservation of underside and wheel housings.</p> <p><b>Cab:</b> Plastic-lined throughout. Floor lined with insulating rubber matting. Wheel housings damped with rubber. Further insulation and damping in cab. Driver's seat adjustable to nine positions, even when vehicle is in motion. Passenger seat adjustable to two positions. Leatherette seat covers. Safety door locks. Coat hooks. Padded armrests. Door pull-to mouldings. Safety inside mirror. Ashtray. Grab handle for front seat passenger. Heating and ventilation systems adjustable over wide range. Ventilation air flow adjustable in all directions. Particularly effective windscreen defrosting. Glove compartment with flap. Two padded sun vizors with vanity mirror on the passenger side. Screw-type mountings for safety belts. Windscreen washer. Headlight flasher. Automatic courtesy light. Hazard warning light system. Two-speed self-parking windscreen wipers with brief-wipe setting. Non-reflecting instrument panel padding. Fuel gauge (complete with clock in "L"-models). Access to passenger compartment. Adjustable draught-free ventilation system in the cab doors. Automatic lane changer.</p> <p><b>Passenger compartment:</b> Seating configurations for 7, 8 and 9 seater versions as follows (from front to rear) at more or less money: a) 7-seater = 2-2-3, b) 8-seater = 2-3-3 or 3-2-3, c) 9-seater = 3-3-3. Plastic-lined throughout including window pillars and luggage area. Safety padding on rear wall of cab. Upper half of trim in cloud white. Entire floor damped with rubber matting. Passenger compartment carefully insulated as in cab. Two comfortable plastic covered bench seats. Safety armrests. Flexible assist straps. Coat hooks. Ashtrays. Courtesy light. Hot air outlets in front of and below front bench seat. Two individually adjustable swivelling, adjustable-flow fresh air vents. Screw-thread anchorages for safety belts. Roof-high luggage compartment, accessible from inside and out.</p> <p><b>Additional on "L" model:</b> Steel sliding roof. Wrap-around trim moulding. Window frames and vent wing frames polished and anodized. Vent wings in the cab windows. Electric clock. Trip recorder. Chromed window protection bars and haircord carpeting in luggage compartment. Side trim mouldings. Rubber strips on bumpers. Chromed VW sign. Pastel white roof and upper body in conjunction with all paintwork colours except white.</p>	<p>Two-tone paintwork (standard on "L"-models). Sliding steel roof (standard on "L"-models). Laminated windscreen. Heatable rear window. Twin convex exterior mirrors. Second sliding door. Lockable tank cap. Rear mudflaps. Automatic transmission (only in connection with 1700 cc engine). Tubeless heavy-duty tyres. Radial-ply tyres (standard on 1700 cc and Microbus "L"-models). Heavy-duty shock absorbers. Brake servo (standard on 1700 cc models). Trailer attachment. Anti-corrosion treatment for body cavities. Day/night rear view mirror. Additional dashboard padding. Lockable glove box. Stationary and auxiliary heater. Warning light for dual circuit brake failure. Complete radio installation in different versions. Blower for ventilation system. Automatic step below sliding door. Head restraints on all seats. Safety belts on all seats. Twin reversing lights. Cloth upholstery instead of leatherette seat covers.</p>
<p>Wheelbase: 94.5 ins. (2400 mm). Track front/rear: 54.9/57.3 ins. (1395/1455 mm). Maximum external length/width/height: 177.4/67.7/77.0 ins. (4505/1720/1955 mm). "L"-model 178.9/69.3/76.4 ins. (4545/1760/1940 mm). Average length/width/height of passenger compartment incl. luggage area: 110.2/59.5/55.1 ins. (2800/1512/1400 mm). Capacity approx. 177.0 cu. ft. (5 m³). Average length/width/height: of luggage compartment 27.6/57.1/31.5 ins. (700/1450/800 mm). Capacity approx. 35.3 cu. ft. (1 m³). Basic models/"L"-models. Unladen weight: 3042/3141 lbs. (1380/1425 kg). Axle loads front/rear: 2227/2800 lbs. (1010/1270 kg). Max. permissible load: 4960/5026 lbs. (2300/2280 kg). Max. permissible trailed load for braked trailers of all types: 1764 lbs. (800 kg). Max. roof load: 220 lbs. (100 kg).</p>		<p><b>M Package (not for VW Microbus "L"-models), comprising:</b> Trip mileage recorder. Rubber strips on bumpers. Vent wings in the cab doors. Twin reversing lights. Electric clock.</p> <p><b>Bad-weather Package, comprising:</b> Windscreen wiper with intermittent operation setting and wash-wipe setting. Halogen foglamps. Rear foglamp.</p>



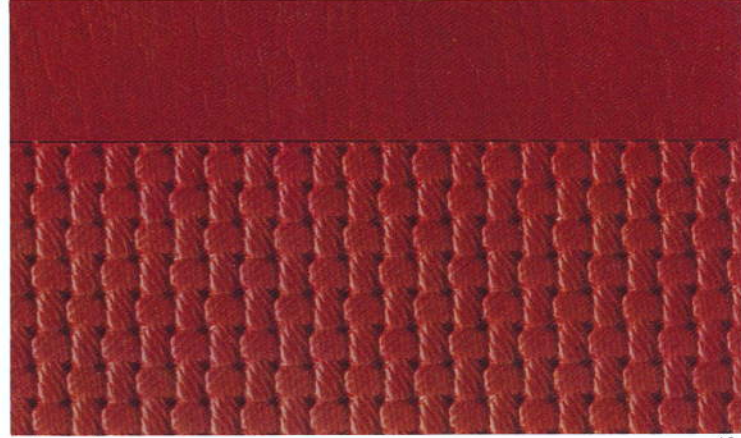
# Buy the VW Microbus. Pick the

## Upholstery



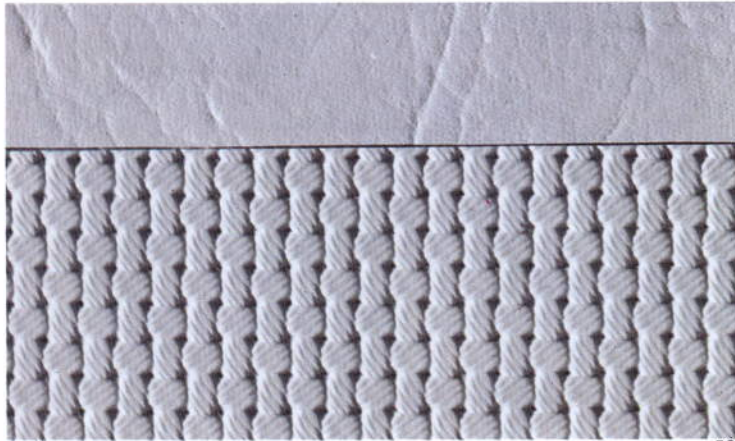
black

-- 50



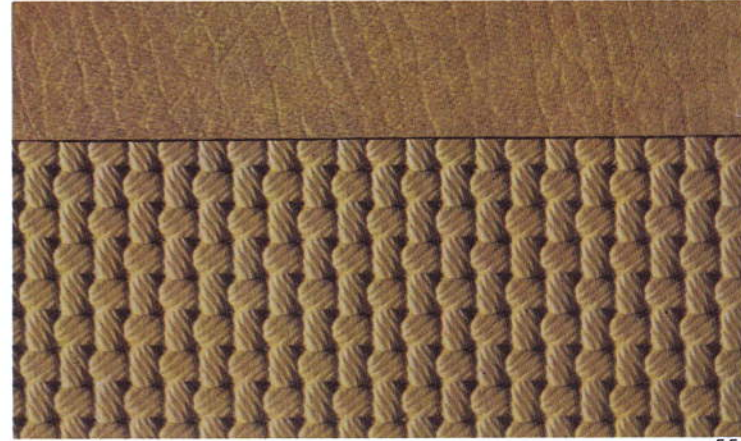
gala red

-- 60



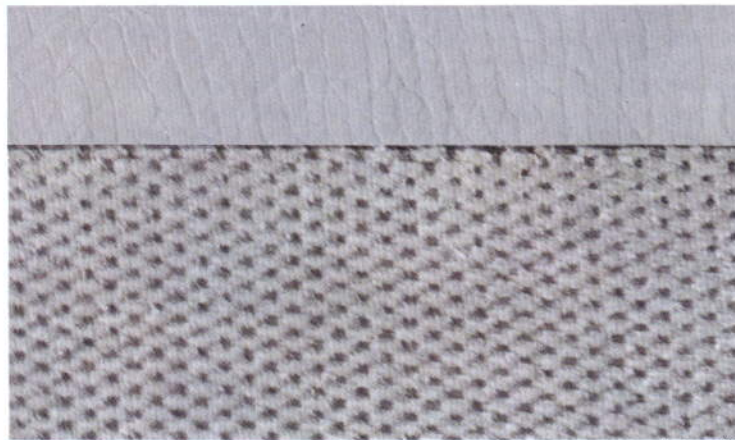
alabaster

-- 52



leather beige

-- 55



alabaster flock

M -- 53

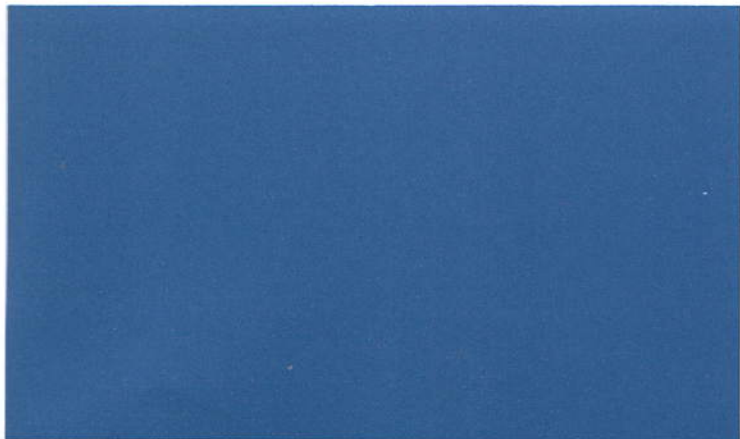
		VW Microbus/ Microbus L					
		Exterior colours					
		orient blue	kasan red	pastel white	brilliant orange	sumatra green	ceylon beige
Upholstery	Leatherette black	-- 50					
	gala red	-- 60					
	alabaster	-- 52					
	leather beige	-- 55					
Cloth	alabaster flock M	-- 53					
Roof colour							
	pastel white	- 06 -					

The pastel white roof finish is standard on the "L"-models and available at extra cost on the ordinary Microbus models.



# colours that suit you best.

Exterior colours.



orient blue 0101 –



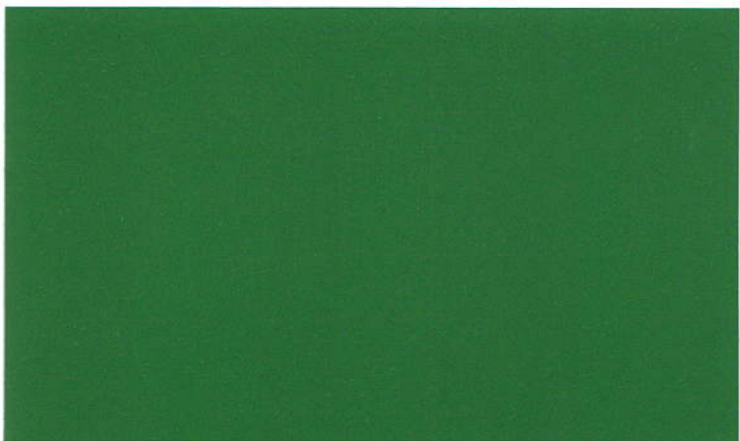
kasan red 0202 –



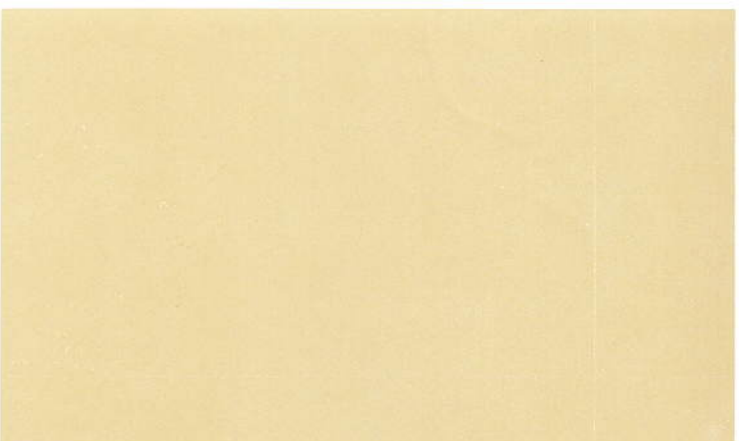
pastel white 0606 –



brilliant orange 0707 –



sumatra green 1717 –



ceylon beige 2020 –



**Your VW Dealer  
is looking forward to your visit.**

