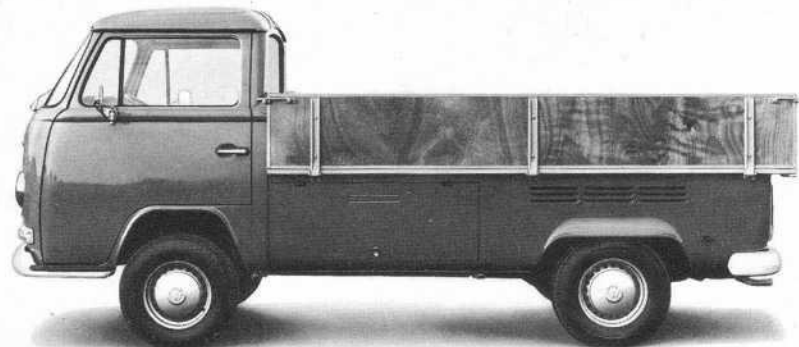
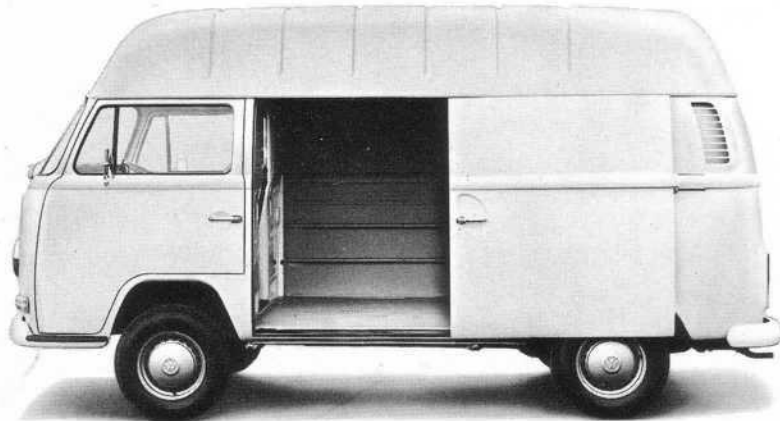


And now a break for the commercials.



3 ways to pick up business.

VW's commercial pick-ups.

They do everything you want a pick-up to do.

And a good deal more. Take the pick-up illustrated.

Tailboard lets down, steel sideboards let down.

No hinges sticking out, and just the right height for loading from a ramp (or unloading to a ramp).

A groovy surface (46.3 sq. ft. of it) and payload of up to one ton.

If you're broad-minded, there's a wider version with 10 sq. ft. of extra platform space, a smooth surface and wood sideboards and tailboard.

And if you've got something to hide, there's the double-cab version, giving

you an extra 64 cu. ft. enclosed load compartment for the equipment and tools you want to keep locked up. And that's on top of its load platform area of 21.3 sq. ft.

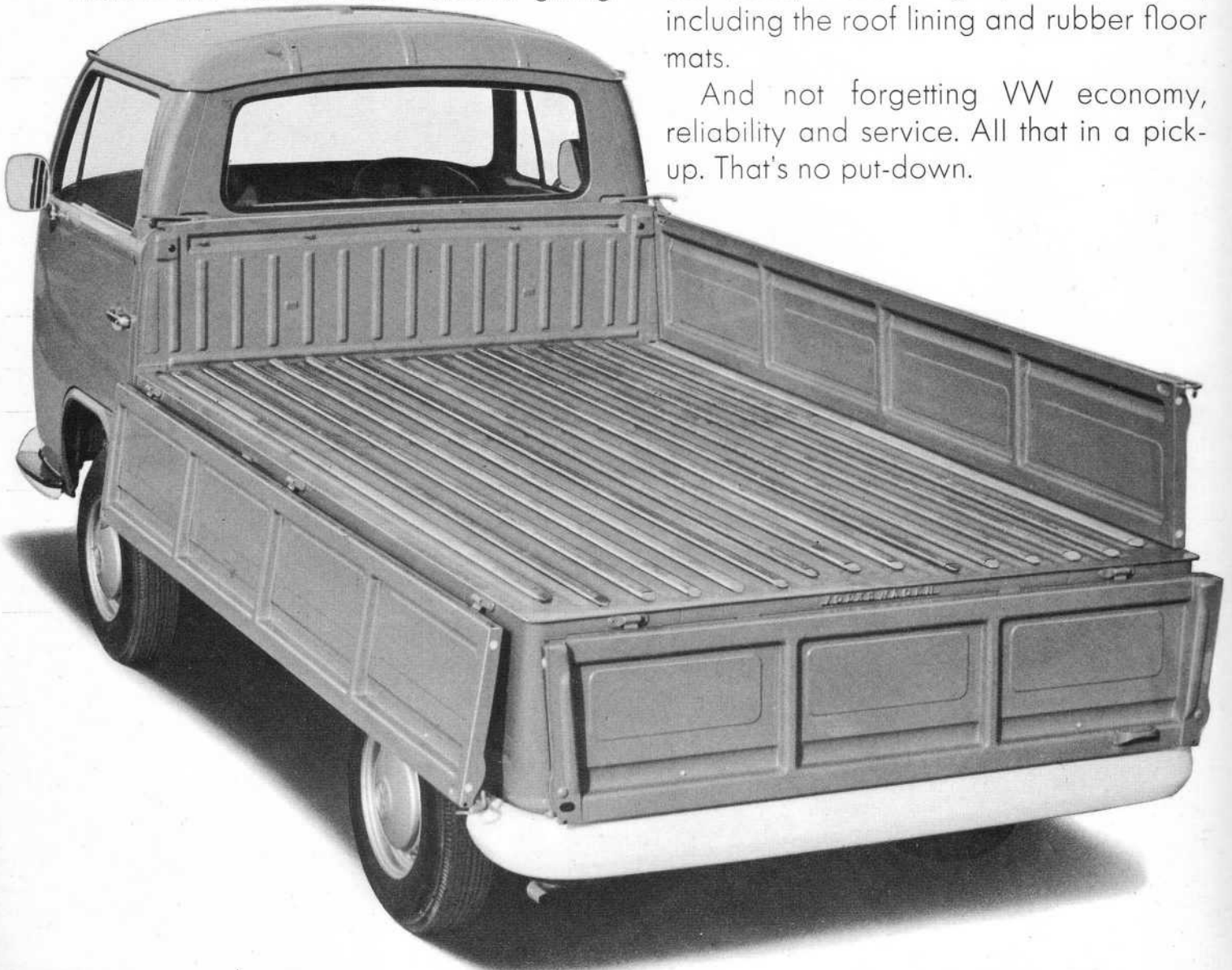
At extra charge there's tarpaulin and bows available to really cover up.

And that good deal more we mentioned?

Well it adds up to quite a lot.

Factory painted, independent all-round suspension, front disc brakes, spare wheel and tool kit, full instrumentation, screen washers, and 2 speed wipers, heating, fresh air ventilation, double passenger seat, full wrap-around bumpers, steering lock, under-floor lockable compartment, rear view mirror, adjustable driver's seat, sun visors, hazard lights, trimmed cab, including the roof lining and rubber floor mats.

And not forgetting VW economy, reliability and service. All that in a pick-up. That's no put-down.



3 ways to deliver the goods.

VW's commercial vans.

Boxes on wheels people call them. We don't mind. Just think how practical a box on wheels can be. Not an inch of space wasted. And 177 cu. ft. of loading space at that. And a payload of practically 2200 lbs.

The van in the picture has loading access through the sliding side door and rear door. There are even more variations if you're interested. Sliding doors left and right. Even a full width partition behind the cab.

Of course, if you want to go really highbrow, there's the High Roofed Delivery Van.

It still looks like a box on wheels. Only a taller one. It gives an extra 42 cu. ft. of space. And just like its open-air brothers, the VW pick-ups, our vans give you a good deal more.

And a good deal is worth repeating. Factory painted, all round independent suspension, front disc brakes, spare wheel and toolkit, full instrumentation, screen washers and 2-speed wipers, heating, fresh air ventilation, passenger seat, full wrap-around bumpers, steering lock, 3 rear mirrors, adjustable driver's seat, sun visors, hazard light, fully trimmed cab, including roof lining and rubber floor mats.

They may be boxes on wheels. But at VW we make sure you box clever.



Technical Specifications.

Engine and electrical system: Air-cooled, four-cylinder, four-stroke, horizontally-opposed, rear-mounted engine. Capacity: 1584 cc. Output 60 bhp (SAE) at 4400 rpm. Down-draught carburettor with automatic choke. Thermostatically-controlled fan air cooling. Special engine oil cooler. 12 volt system. 45 Ah battery. Early cut-in generator - max. output 38 amp (approx. 540W.).

Optional at extra charge (not for Pick-Up and Double Cab Pick-Up) 1679 cc engine. Output 74 bhp (SAE) at 5000 rpm. Twin carburettor system with automatic choke. Air and oil cooling as above. 12 volt system. Battery 45 Ah. Generator 55 amp. (approx. 770W.).

Transmission: Via clutch, fully and baulk synchronised four-speed gearbox. Gear shifting via central floor-mounted lever.

Chassis: Suspension by means of torsion bars front and rear combined with double-acting telescopic shock absorbers. Wheel suspension and location by means of cranked trailing links up front and trailing arm at the back. Torsion bar stabilizer on the front axle. Hydraulic steering damper and safety steering column. Dual circuit brake system with disc brakes up front and brake pressure limiting valve. (1700 cc models with brake servo.) Tyres: for 1600 cc models: 7.00 - 14 8 PR; Microbus L 185 R 14 (radial ply); 1700 cc models: 185 SR 14 (radial ply).

Weights, dimensions and performance: All vehicles have the following data in common: Wheelbase 94.5 in. (2400 mm). Track front/rear 54.6/56.6 in. (1386/1439 mm). Permissible trailed load (braked) 1764 lbs (800 kg). Performance (for 1700 cc models in brackets):

Maximum speed 68 mph [110 km/h] (78 mph [125 km/h]).

Maximum hill climbing ability on good roads, fully laden and in first gear 1: 3.7 (1: 3.6).

Consumption (regular fuel) *24.8 miles per imp. gallon. (11.4 l/100 km), (22 mpg [12.9 l/100 km]).

*) Consumption measured with half payload at steady $\frac{3}{4}$ of top speed plus 10%.

Exterior colours: Chianti red, Pastel white, Neptune blue.

Upholstery: Dark beige.

Prospective purchasers are advised that the models and specifications shown in this brochure may not necessarily be available ex-stock in the United Kingdom. The list below shows the models which Volkswagen G. B. Limited import to Standard U.K. Specification. Models listed as available to Special Order only will involve a lengthy delivery period.

Standard U.K. Specification:

VW Delivery Van (single sliding door)

VW Pick-UP

Special Order Only:

VW Delivery Van (two sliding doors)

VW Double Cab Pick-UP

VW High Roofed Delivery Van

VW Pick-UP with enlarged platform

VW Kombi

VW Microbus

VW Microbus L

There is also a full range of factory-approved accessories available for your VW Commercial, as follows:

Radio. Anti-mist panels. Interior dipping rear view mirror. Front parcel shelf. Lockable petrol cap. Tow bar. Finger plates. Front air intake grill. Mud flaps. UK roof racks. Tow rope. Warning triangle. Fog lamps. Spot lamps. Inspection lamp. Cigarette lighter. Radio. Full range of car care products.

