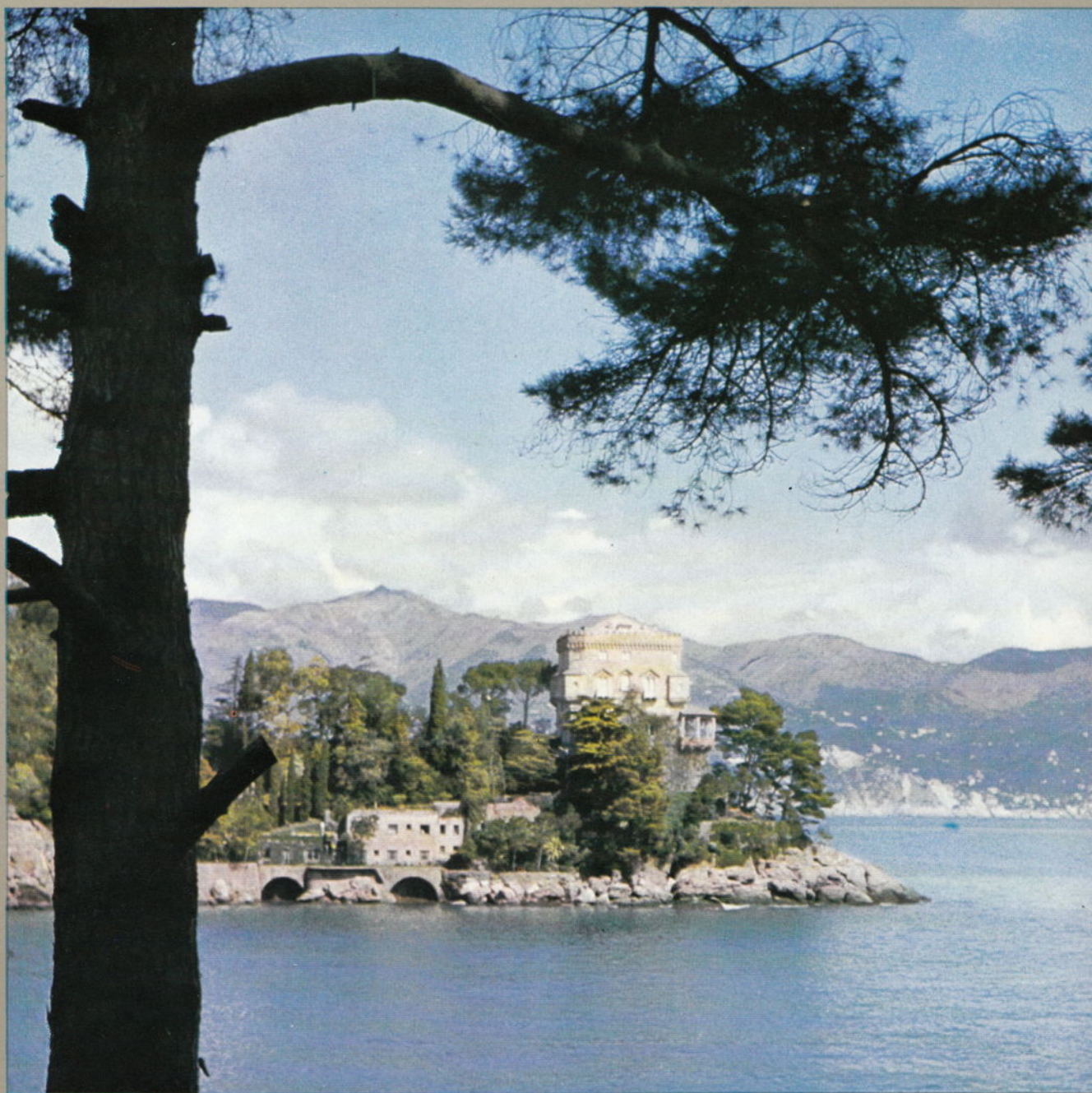


**There are many ways
of spending your holidays.**



Here are just a few of them.

**You can take to a tent.
Or borrow a bungalow.
Or house in a hotel.
Or simply relax at home.**



But there is another solution:

The VW Campmobile.



You just take your pick.

VW Campmobile A 67

Standard equipment



There is no question of roughing it when you take to the road in the VW Campmobile. It has everything. Comfortable beds. A snug sitting-room. And a practical kitchen.

You can really cover the ground — any ground — with the VW Campmobile. It can tear along main roads for hours on end. It's nippy and manoeuvrable in city traffic. It's an indefatigable climber of mountains. It never overheats. Because its engine is air-cooled. And if the weather breaks when you're way up in the

hills, so what. Air can't freeze. (And the Campmobile's living quarters are fully insulated.)

Home's where you are, no matter where you stop. There's no luggage to tote about. There's no luggage to load and unload. Everything you're likely to need is packed away neatly in the Campmobile's cupboards. Depending on the version you choose, two, three or even four of you can live, eat and sleep in comfort in the VW Campmobile.

The hinged pop-up roof (Model B 67) turns into a

VW Campmobile B 67

A 67 plus hinged pop-up roof with bed and luggage rack. The roof incorporates three windows with mosquito netting.



comfortable cot at night. And during the day it provides extra headroom. It has three screened — mosquito-proof — windows for generous ventilation. And there's a luggage rack as well.

An evening in the cosy surroundings of the VW Campmobile is the perfect end to a perfect day. You can sit outside under the tent (Model H 67). By candlelight. Or simply moonlight. Or you can spend a comfortable evening in the pleasantly lit (electric) living-room.

And if you feel like a bite before turning in? Nothing easier.

There's an icebox to keep your provisions fresh no matter how hot it is.

Standard equipment

Living-room lined in natural birch plywood. Roof and side walls fully insulated. Flooring: plywood covered with felt-lined PVC. Larder with icebox (48 litres),

VW Campmobile H 67

B 67 plus free-standing side-mounted tent.

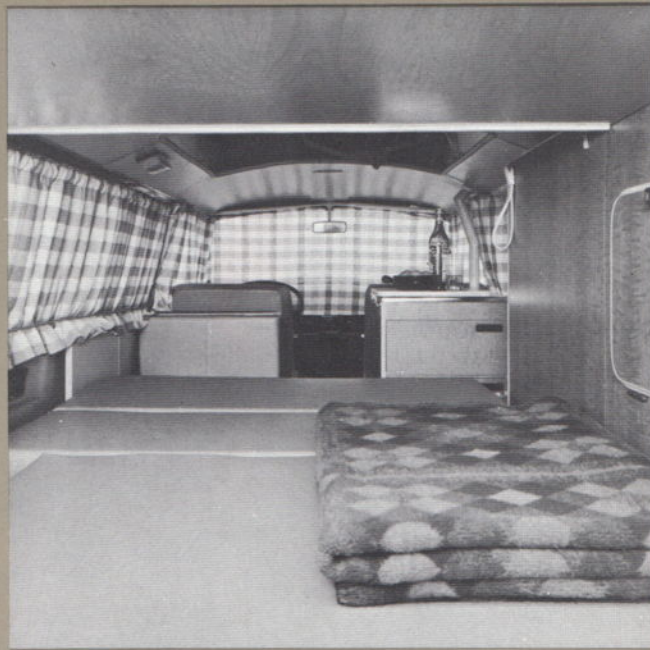
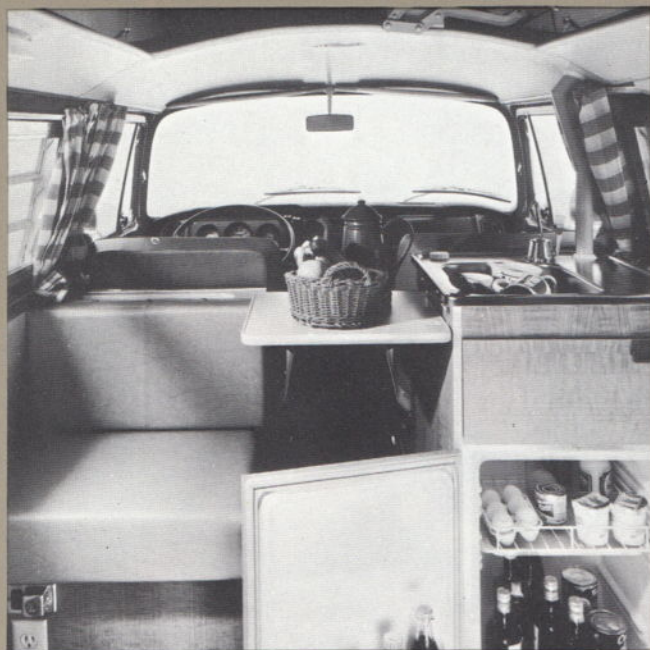
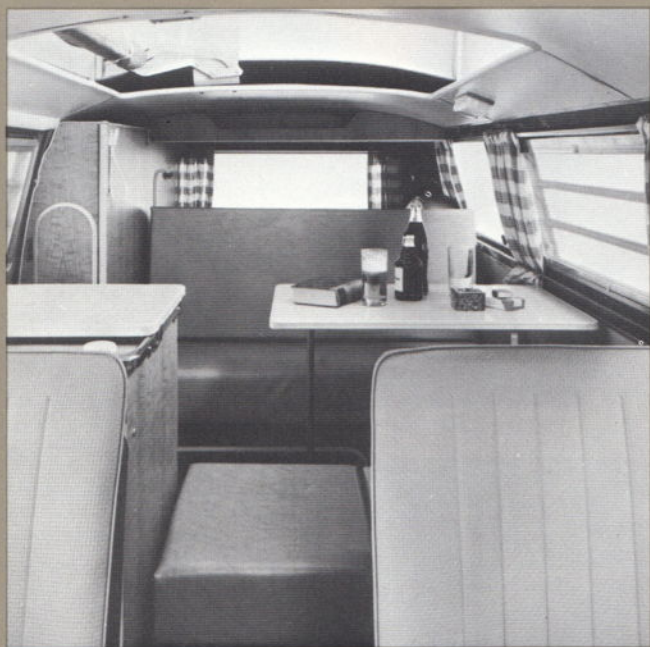


watertank (28 litres). Washbasin with manual pump, cover and drawer. Washing cabinet with folding table. Linen cupboard. Wardrobe with mirror. Upholstered rear bench seat with storage locker. Foam rubber mattress over engine compartment. Padded stool between front bench seat and larder. Leatherette upholstery. Folding table. Cover for spare wheel. Storage box below roof above engine compartment. Child's bed in cab. Mosquito net for rear door aperture.

Mains connection (110 volt US type and 220 volt German type available) on side of vehicle, including two sockets with fusebox in living compartment. Two louvre windows including mosquito netting. Curtains for all windows. 12 volt electric ceiling light.

The side marking lights are US equipment.

Camping equipment



Technical Data and Equipment.

Engine: 1.6 litre, 4 cylinder, horizontally opposed rear-mounted. Output 57 bhp (SAE) at 4400 rpm. Air cooling, low maximum revs and special engine oil cooler mean hours of top speed cruising without engine strain. Automatic choke: flick-of-the-switch starting no matter how cold the weather, immediate full power. Electrical system: 12 volt with heavy duty (540 W) early cut-in generator — low current drop, high output.

Transmission: Via clutch, fully synchronised four-speed gearbox and differential to the rear wheels. All systems concentrated to form a single unit with the engine at the rear axle — little loss of power and no propeller shaft. Gear shifting via central floor-mounted lever.

Chassis: Independent wheel suspension and torsion bar springing on both front and rear axles. Hydraulic shock absorbers, stabilizer on the front axle, double-joint rear axle, three-point rear wheel mounting configuration; unusually well-balanced suspension. Positive steering with hydraulic steering damper. All adding up to passenger car suspension and ride, neutral steering and outstanding roadholding. Dual circuit brake system with large braking area — high degree of safety.

Performance: Maximum speed in mph 65
Consumption (regular fuel) * in miles per imp. gallon 27,0
Optimum hill climbing ability on good roads, fully laden
and in first gear 1 : 3.7

Special Equipment and Features

Cab: Lined throughout. Floor lined with insulating rubber matting. Wheel housings damped with rubber. Further insulation and damping in cab. Driver's seat adjustable to nine positions even when vehicle is in motion. Backrest adjustable over full range. Passenger seat adjustable to two positions. Leatherette seat covers. Safety door locks. Coat hooks. Door pull-to mouldings. Safety inside mirror. Ashtray. Grab handle for front seat passenger. Heating and ventilation systems adjustable over wide range. Ventilation air flow adjustable in all directions. Particularly effective windscreen defrosting. Glove compartment. Two padded swivelling sun visors. Screw-type mountings for safety belts. Windscreen washer. Headlight flasher. Courtesy light. Emergency warning light system. Two-speed windscreen wipers. Non-reflecting instrument panel padding. Fuel gauge. Access to living compartment.

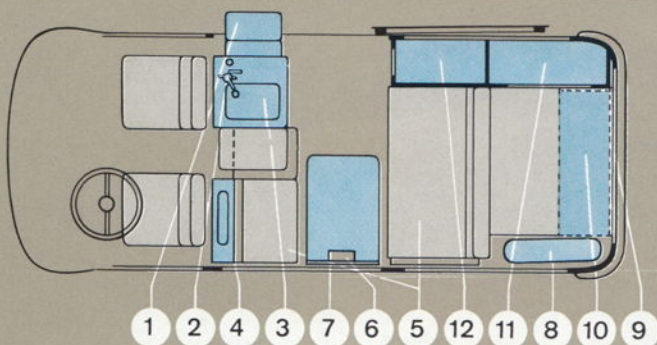
Modification: In the right hand drive version, a two-seater bench seat, approx. 930 mm wide, for front seat passengers and a full-width dividing wall are fitted. The spare wheel is located under this double seat. The upholstered stool is not supplied. The wash basin is of plastic. The storage box is replaced by a luggage net. The icebox holds 60 litres, the water tank 30.

Living compartment: Sliding door at side. Spring loaded, full width rear door opening upwards. For special camping equipment see main text.

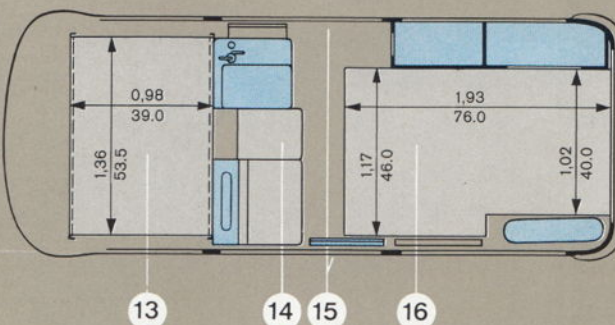
Extras at extra charge: Steel sliding roof. Lockable engine compartment lid. Automatic retractable step. White wall tyres. M + S tyres. Electrically heated rear window. Twin back-up lights. Vent wings in the cab doors. Two electric blowers for fresh air ventilation system. Additional safety instrument panel padding. Brake circuit failure telltale. Stationary and auxiliary heating. Laminated windscreen. Complete radio set.

* Consumption measured with half payload at steady $\frac{3}{4}$ of top speed plus 10 %.

Volkswagens are delivered to 140 countries the world over. Obviously, traffic laws and type-approval regulations tend to vary from country to country. You may find, therefore, that the models and equipment actually offered for sale differ from the data given in this brochure. So please ask your nearest VW dealer for information regarding the wide range of VW models and equipment valid for your country.



- 1 Larder with folding table
- 2 Watertank (28 litres) and manual pump
- 3 Icebox (48 litres), washbasin and washing cabinet with folding table
- 4 Storage space behind the driver's seat
- 5 Front and rear bench seats upholstered with storage space below
- 6 Ceiling light (12 volt)
- 7 Folding table
- 8 Cover for spare wheel



- 9 Mosquito net for rear door aperture
- 10 Storage box below roof above engine compartment
- 11 Linen cupboard
- 12 Wardrobe with mirror
- 13 Child's bed in cab
- 14 Upholstered stool
- 15 Two louvre windows including mosquito netting
- 16 The wide comfortable double-bed is made up of the rear bench seat cushion and the foam rubber mattress above the engine compartment.