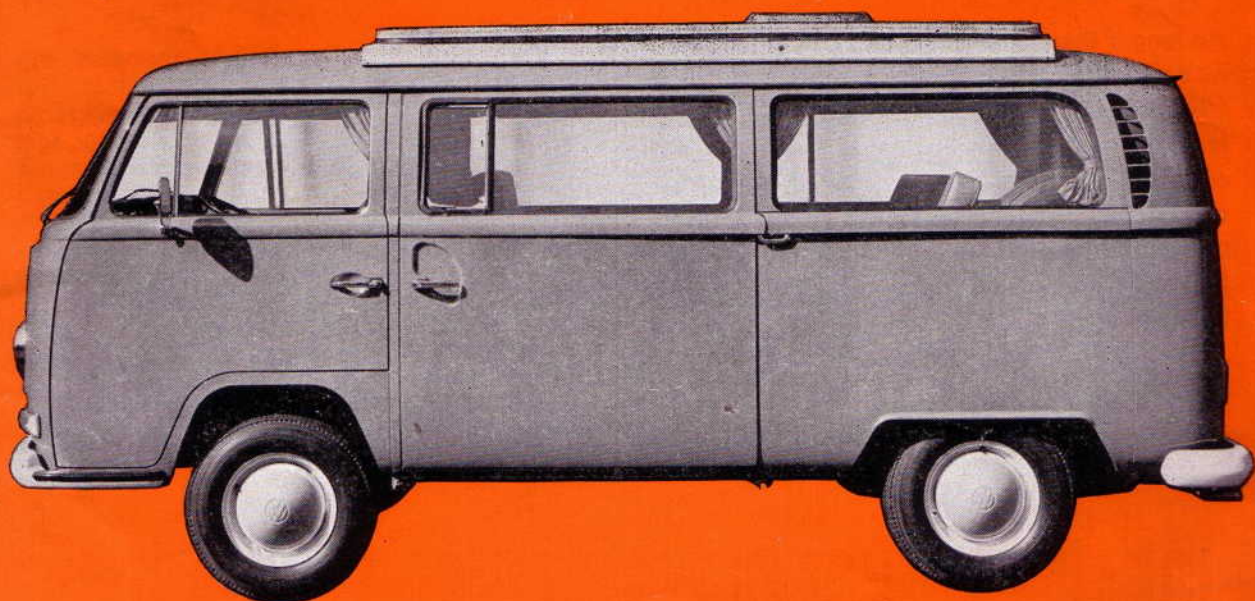


The new
DEVON
Motor
Caravans...



...set a new trend in luxury at low cost

Here's a vehicle that has everything
and does everything



The new Devon Motor Caravans have a one-piece wind-screen.

No longer than an ordinary saloon car (and just as easy to handle) it is ideal for day-to-day use all-year-round. Shopping, taking the children to school, travelling on business, picnics in the country . . . it takes everything in its stride without any problems. A Devon Motor Caravan thrives on the busy life and its economical performance doesn't put an undue strain on the family budget.



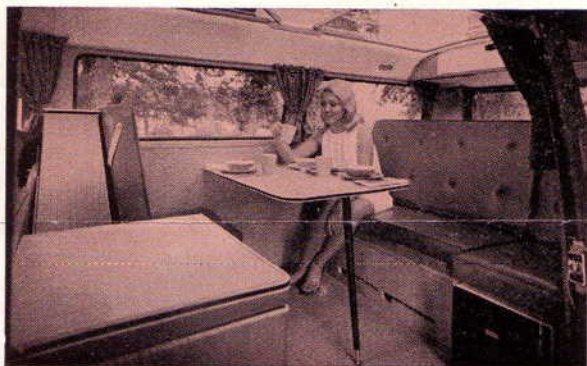
The large attachable awning doubles the accommodation area.

And what a boon for carefree, inexpensive holidays at home or abroad. The clever interior layout offers seating capacity for a really large family and still has ample space for baggage. By night, ample and comfortable sleeping accommodation for two adults and two children and the spacious attachable awning doubles the living (and sleeping) space. No longer the problems associated with towing . . . no more speed restrictions . . . no more parking difficulties . . . a DEVON Motor Caravan is a car, a hotel and a home rolled into one. Add to these advantages the fact that it is built on a Volkswagen chassis and you'll appreciate why the DEVON is Britain's most economical and most luxurious motor caravan.

IDEAL FOR HOLIDAYS AT HOME OR ABROAD .

Three types of DEVON Motor Caravan are available. The 'TORVETTE' is a conversion on the new Volkswagen 'Kombi'. The 'CARAVETTE' and the newly introduced 'EUROVETTE' are on the new VW 'Clipper'.

All three models have these outstanding features: Cooker unit, water storage, washing facilities and built-in food cooler Tables detachable for indoor or outdoor use Full size double bed (slides away by day) and double hammock bunk for children Natural oak finish to all internal woodwork Floors in Armstrong relief textured tiles Attractive washable lining throughout Reversible deep-foam cushions covered in Vinyl on one side and Duracour fabric on the reverse Attachable awning with covered sides Curtains in gay modern fabrics on alloy rails and nylon runners Built-in hanging wardrobe with access at base for shoe storage Accommodation for bedding in rear seat Roof locker, two large drawers, and other cupboards.



Ample daytime living room, large windows give maximum light.



Full-size double bed (over 6 ft) slides out from rear storage position and still leaves ample floor space.

Additional features on the 'CARAVETTE' and 'EUROVETTE' include: ● 7 gallon plastic tank with water pump ● Melamine crockery for four persons ● Stainless steel cutlery for four persons ● Built-in fluorescent lighting ● Luxurious internal trim ● And (on 'EUROVETTE' only) ● Built-in sink unit ● Two-burner cooker with grill and spacious oven ● And other special de luxe fittings. The newly-designed 'straight-up' DEVON Elevating Roof (fully insulated and head lined) is available on all models at an extra charge of £100 and an additional hammock bunk can also be fitted in this roof area as a further optional extra.

RECOMMENDED RETAIL PRICES

DEVON EUROVETTE

£1,235

(no purchase tax)

DEVON CARAVETTE

£1,175

(no purchase tax)

DEVON TORVETTE

£1,075

(no purchase tax)

... PERFECT FOR DAILY USE ALL-YEAR-ROUND

In addition to Service facilities throughout the world, all three models in the Devon range of Motor Caravans have these outstanding Volkswagen features.

Air-cooled, 4-cylinder horizontally-opposed, rear-mounted 1600 c.c. engine producing 57 b.h.p. automatic choke cruising speed of 65 m.p.h. average fuel consumption of 27 m.p.g. optimum hill-climbing ability with full load in first gear 1 in 3.7 fully-synchromesh four forward gears plus reverse central, floor-mounted gear lever independent suspension on all four wheels 12-volt electrical system hydraulic shock absorbers with stabilizer on front axle and double-joint rear axle positive steering with hydraulic steering damper dual-circuit brake system for maximum safety driver's seat can be set to nine positions and backrest to any position full-width curved windscreen for maximum visibility two-speed windscreen wipers

generous exterior mirror on both sides new, extra-large flashing indicators sturdy wrap-around bumper bars - the front one incorporating a step on each side for easy entry/exit; twin-jet screenwashers large sliding door on nearside of vehicle for maximum safety winding windows to driving cab non-reflecting instruments and generous glove compartment in a safety-padded panel adequate heating and ventilating controlled from instrument panel ensure maximum interior comfort in all weathers individual front seats give access to rear of vehicle extra-wide track, front and rear, gives outstanding road-holding safety locks and concealed hinges on all doors safety-belt anchorage point built in.

In brief—all the safe, sturdy, reliable and economical features for which the Devon range of Volkswagen conversions is famous



The Devon range of motor caravans is designed and produced by Devon craftsmen

J. P. White - Sidmouth

ALEXANDRIA WORKS, SIDMOUTH, DEVON. Tel. 2345 (3 lines)



The specifications, details and prices in this leaflet are subject to change without notice.